

# DNRT'S DOO-DOO-ABLE STRATEGIES FOR LAND MANAGERS

Addressing Dog-Related Concerns on Conservation Land



Presentation By; Leah McFarland

Land Steward

Dartmouth Natural Resources Trust



# TABLE OF CONTENTS



**DNRT's Land Management  
Dog-Related Issues**



**Dog Walking Trail Etiquette**



**DNRT's Strategies  
Implemented**



**Lessons Learned**

## DNRT'S LAND MANAGEMENT DOG RELATED ISSUES

- Dog poop on trail!
  - Gross
  - E. coli bacteria
  - Nitrogen source
- Dog fights/bites
  - Dog on dog
  - Dog on human
- Knocking trail users over
- Erosion on slopes to waterways
- Chasing/disturbing wildlife





## DOG WALKING TRAIL ETIQUETTE

1. Have Control Over Your Dog
2. Constant Vigilance
3. Be Respectful of Other Trail Users
4. Always Ask
5. Pick-up the Poop



# LETTER TO EDITOR

## PLEASE BE A RESPONSIBLE DOG OWNER!

BY LEAH MCFARLAND

There has been an increase in irresponsible dog walking on DNRT trails over the last few months, so I thought I would take the time to remind my fellow dog owners and walkers that they are legally responsible for their dog's behavior and actions while on DNRT reserves. Dogs must be under your control at all times, either by leash or voice command. Only dogs trained in recall are allowed off leash and they *must* respond to commands. If you cannot control your dog off-leash, then it shouldn't be off-leash in the first place!

This rule may seem unnecessary, however, this rule was created to keep all dogs and trail users safe! Imagine if your off-leash dog runs up to another hiker and their dog. The other hiker knows that their dog is reactive to other canines, so chooses to keep their dog on a leash. You try to recall your dog, but it does not listen to you and continues to bother the other leashed dog. A fight breaks out and both dogs get injured. You are the once responsible for paying both vet bills, because ***you are the one responsible*** for your dog's behaviors and actions. This scenario has occurred on DNRT trails too many times.

DNRT reserves are privately owned and are open to the public. We have the right to create rules to ensure our trail users are safe. Please follow all posted rules so everyone can enjoy the trails. Thank you, from your fellow dog owner and DNRT Land Steward!



Posted in Dog Blog, News/Blog



STAY UP TO DATE WITH THE LATEST NEWS  
AND INFORMATION FROM DNRT

## DOG BLOG # 2: A MESSAGE FROM LEAH: PLEASE HELP ME BY PICKING UP YOUR DOG POOP

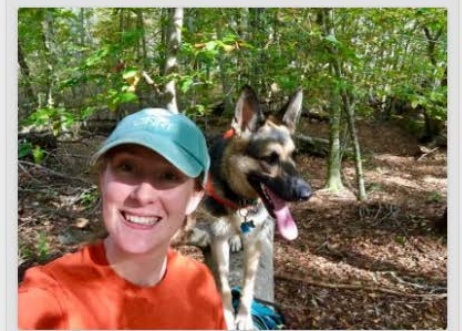
BY LEAH HOWARD, DNRT LAND STEWARD

The worst thing about walking a dog is picking up its poop and carrying the smelly bag throughout the duration of your walk. Usually it's the whole walk because, if your dog is like mine, it poops at the beginning of the trail out of sheer excitement of being outside. I do not enjoy picking up dog poop and I admit for years I did not, until I recently started to maintain trails on land trust properties. Then I encountered my worst nightmare: hitting a fresh pile of dog poop hidden behind tall grass as I weed whack along the trail. *Internal shudders!*

**I do not enjoy being covered head to toe in dog poop.** It does not smell nice and it tastes awful. Yes, sadly some of it lands on my lips. Please, rescue me from my living nightmare and pick up your dog poop!

After encountering my first spray of dog poop, I did some research on dog poop to make sure I was not going to die from ingesting it. To my dismay, I learned that **dog poop contains bacterial like fecal coliform that cause cramps, diarrhea, intestinal illness, and kidney disorders in humans.** Oh my! **Dog poop also contains roundworms, tapeworms, and salmonellosis.** Oh no!

If you are not concerned for my safety, please know that your **dog can get sick as well from other dog's poop** just like you and I can. Or if you have children, they are the most likely to get dog poop on them when walking a trail, because children are natural explorers and like to touch everything. Pick up your dog's poop and save other dogs, children, and



Leah and her German Shepard, Ashe





## EDUCATIONAL DOG SIGNS

# RESPONSIBLE DOG WALKING BROCHURE

- Passed out at all dog walks
- At DNRT Reserves
- Local vets offices

## DOG WALKING



We love our canine friends!  
Make sure to keep your dog  
and others safe while  
exploring our trails!



### Always ask.

When you see another dog approaching on a trail, recall your dog and move to the side of the trail with your dog restrained. **If your dog is friendly, always ask the owner if the dogs can say hi to each other.** If they say no, respect their answer and keep hold of your dog as they pass. Some dogs do not like having other dogs invade their space. **Always ask if you can pet a dog too.** Some dogs do not like getting approached by strangers.

### Pick up the poop.

The last way you can keep your dog safe while trail walking is to **always pick up, bag, and take home your dog's waste to throw away.** Dog poop contains harmful bacteria that can make other dogs sick. Make sure you throw the poop away in the trash. Even so-called biodegradable plastic bags cannot decompose in woods or fields; they need special high heat compost systems to break down.

### Be respectful of others.

Some people may be afraid of dogs or, at the very least, do not enjoy getting jumped on. **While walking your dog, if you see another trail user walking your way, always call your dog back to you and step to the side to let them by.** Restrain them with a leash or hold onto their collar.



### Have control of your dog.

Having control means that your dog listens to you and obeys your commands **every time OR you restrain them with a leash.** A controlled dog will not run off trail chasing after an animal, will not run up to people or other dogs, and will not be out of your sight. This will protect them from getting a face full of quills from a porcupine, fighting with an unfriendly dog, or getting lost.

### Constant vigilance.

Being constantly aware of your surroundings helps keep your dog safe, especially on multi-use trails. Listen for other trail users as you walk so you can keep your off-leash dog. Having

With thousands of acres of protected land and over 35 miles of trails, DNRT properties offer great places for outdoor exploration. Our properties and trails are multi-use, meaning not only can you walk and dog walk, but you'll often find folks cycling, horseback riding, and trail running.

Learn how to keep your dog safe, as well as how to make sure our properties are safe and welcoming for all who use them!



## SAFE DOG WALKING



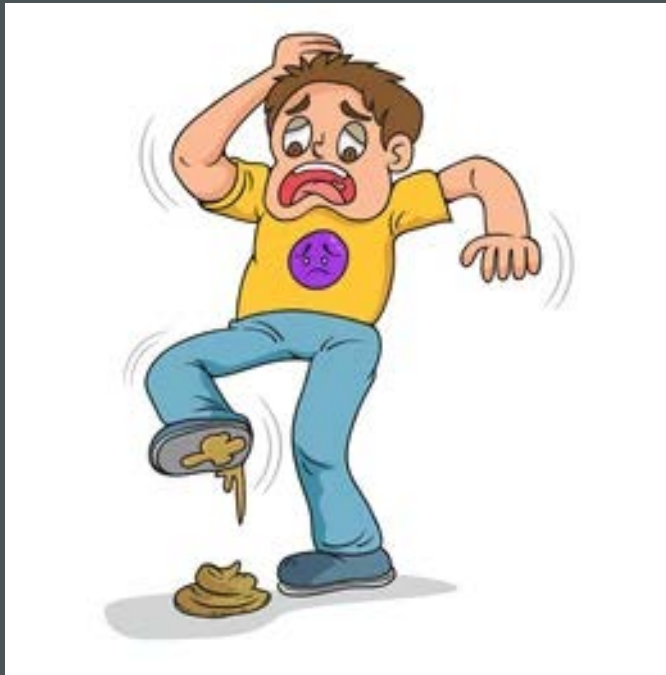
We love our canine friends!  
Make sure to keep your dog  
and others safe while  
exploring our trails!



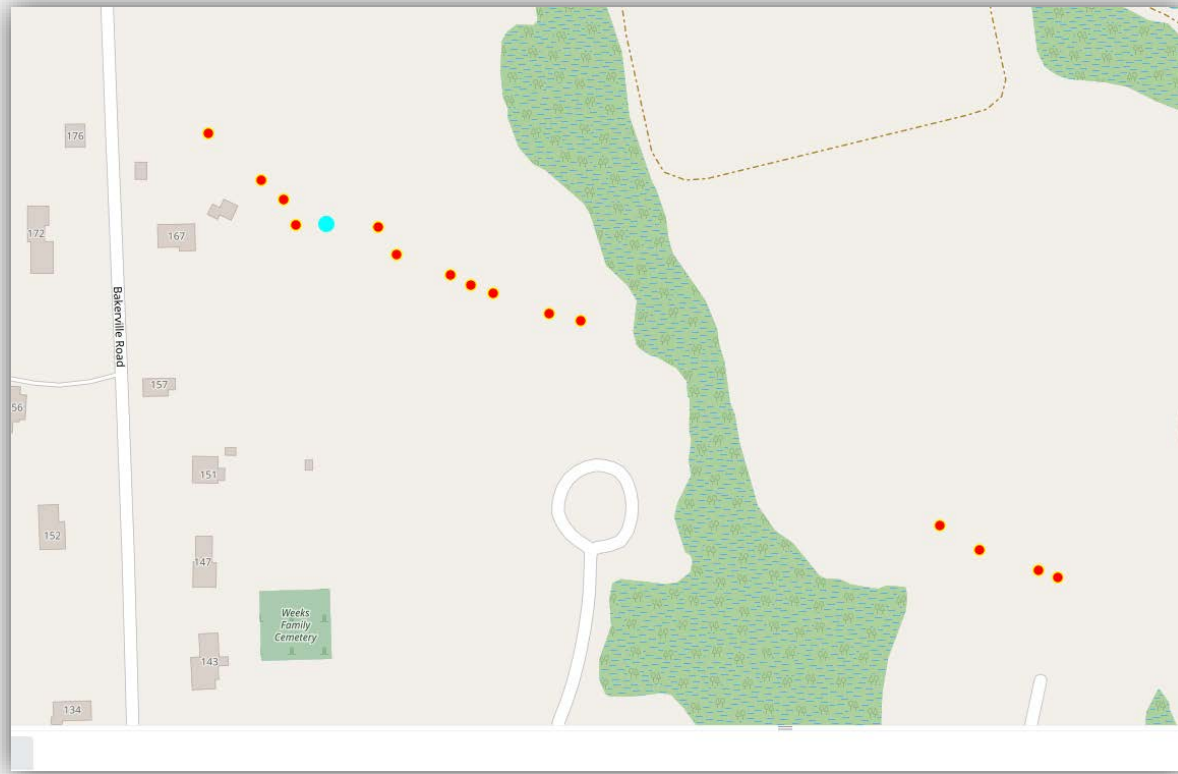
For more information, please contact:  
**DARTMOUTH NATURAL RESOURCES TRUST**  
318 Chase Road  
PO Box 70567  
Dartmouth, MA 02747  
Phone: (508) 991-2289  
Email: info@dnrt.org  
Web: www.dnrt.org



# POOP FLAGS



# POO-LUTION APP



## Poo-lution on DNRT Trails

Help DNRT monitor the amount of dog poop on our trails.

Name of Reporter

Date and Time of Report

What Reserve?

Select the Reserve you are reporting on.

Empty Poop Bag

Full Poop Bag

Just Poop.

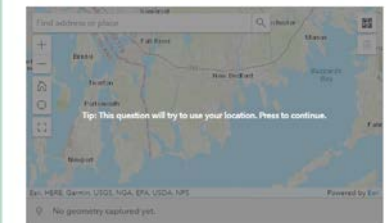
Picture of Poop on Trail

Did You Remove the Poop?

If you are kind enough to remove the poop let us know. This is not necessary.

Location of Poop\*

Mark the location of the dog poop.



Number of Poops

# FRIENDS OF THE BLUE HILLS



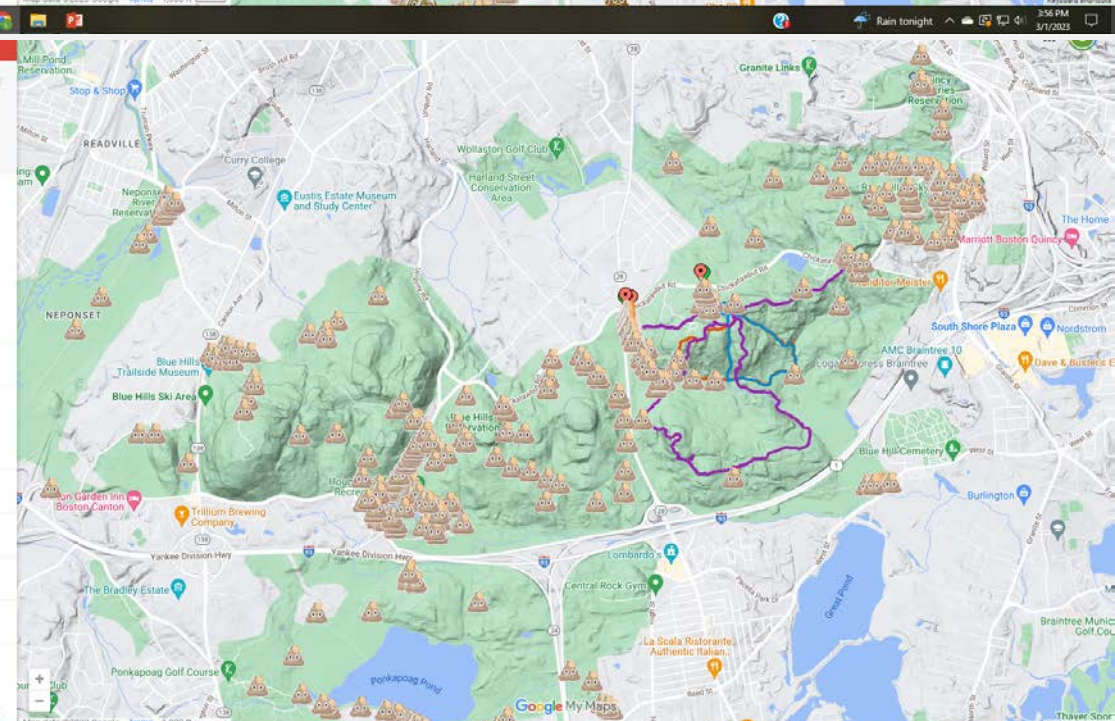
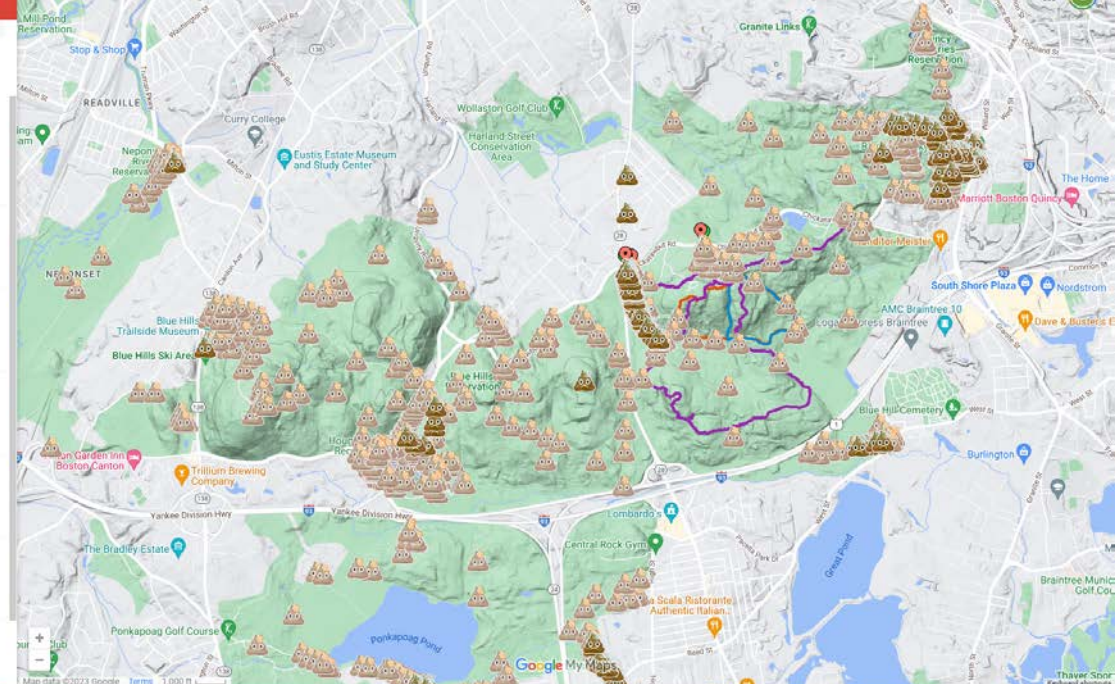
**EWA**  
Earthwise Aware

- Survey Routes
  - MI Route Start
  - MI Route
  - MI Route End
  - IH Route Start
  - ... 5 more
- 2021-12 Records [243+]
  - All Items
- 2022-Winter Records [989+]
  - All Items
- 2022-Spring Records [1205+]
  - All Items
- 2022-Summer Records [765+]
  - All Items
- 2022-Fall Records [476+]
  - All Items
- 2023-Winter Records (146+)
  - All Items

Type here to search

Project goal: Study the impact of dog poop littering in the Blue Hills Reservation.  
4,254 views  
Published on February 12  
[SHARE](#)

- Survey Routes
  - MI Route Start
  - MI Route
  - MI Route End
  - IH Route Start
  - ... 5 more
- 2021-12 Records [243+]
- 2022-Winter Records [989+]
  - All Items
- 2022-Spring Records [1205+]
- 2022-Summer Records [765+]
- 2022-Fall Records [476+]
- 2023-Winter Records (146+)



# OUTHOUNDS ADVENTURE WALKS

**OutHounds Adventure & Training Academy**

P.O. Box 50806, New Bedford, MA, United States, Massachusetts  
 (774) 473-9089  
 outhounds@gmail.com  
 outhoundsadventureacademy.com  
 Online classes · In-person classes  
 Price Range · \$\$  
 Rating · 5.0 (9 Reviews)

**Photos** See all photos

**OutHounds Adventure & Training Academy**  
 January 23 · 🌐

Sometimes even the newspaper likes to come (impromptu no less!) out on an Adventure. Thank you [Dartmouth Week](#) for joining us Saturday on our [Dartmouth Natural Resources Trust - DNRT Adventure](#)--really great pictures!

DARTMOUTH.THEWEEKTODAY.COM  
**Dartmouth dogs get social on group hike**  
 Dogs of all shapes and sizes gathered at the Dartmouth Natural Re...

19 likes · 4 shares

## The Pros & Cons of Off Leash Dogs

FROM THE OUTPOST ONLINE EDITION

### ENVIRONMENTAL IMPACTS

Regardless of how well-trained and behaved they may be, off leash dogs especially present a danger to their surroundings. If your dog is roaming off leash, it's likely he will be out of sight or inaccessible when the need for "going" #2 arises. As a result, the dirty deed gets left behind to mar the natural environment.

Want to read more? Find the full article on The OutPost

WWW.OUTHOUNDSADVENTUREACADEMY.COM



# WHAT IS NEXT?

- Responsible Dog Walking Webpage
- Tabling Reserves
- Continue Partnership with OutHound Adventure
- DNRT's own Tails on Trails social dog walk



# NEXT UP KELLY'S PRESENTATION ON LEARN.LEASH.LEAD PROGRAM



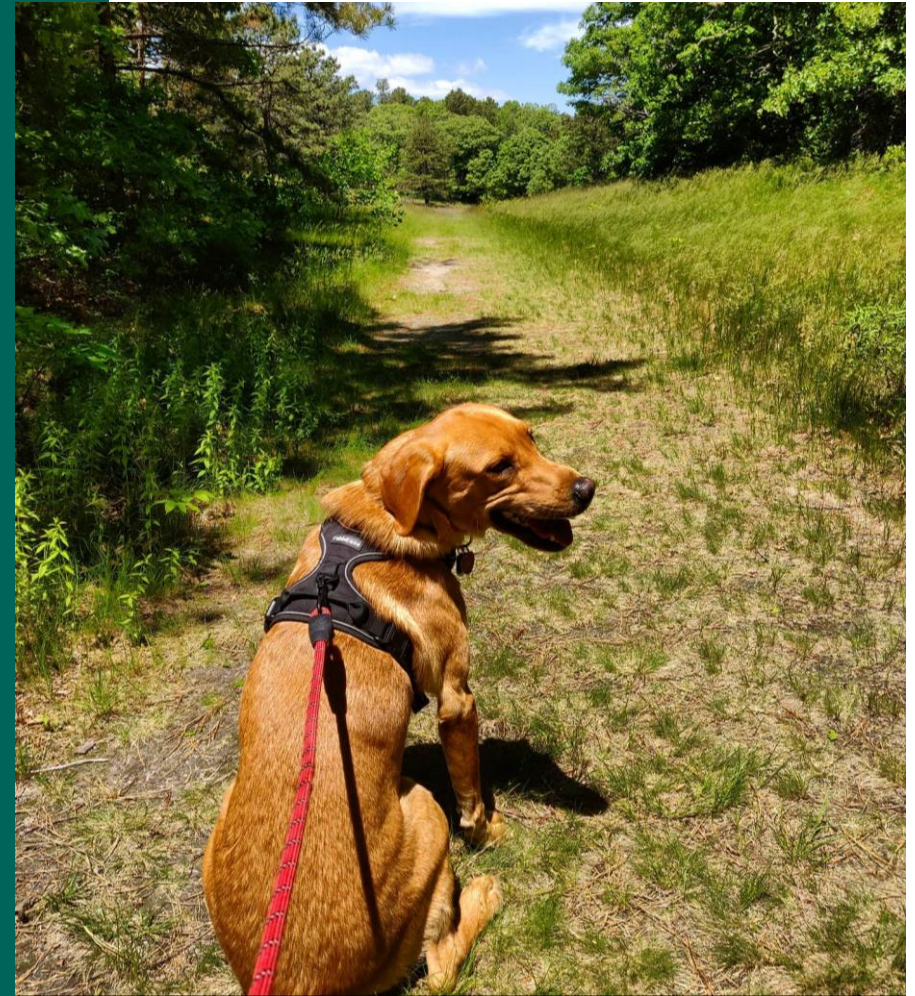
PRESENTATION BY:  
LEAH MCFARLAND  
LAND STEWARD,  
DNRT  
LEAH@DNRT.ORG  
(508) 491-8246

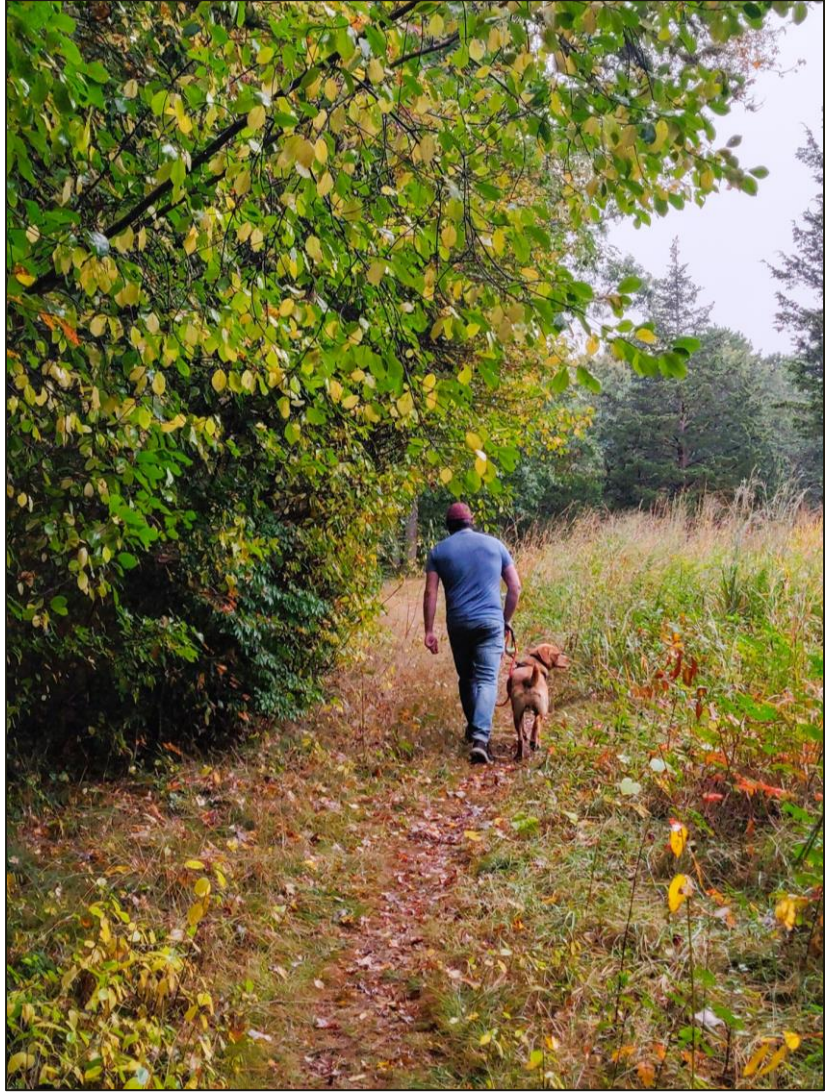




# Learn.Leash.Lead

*A pilot initiative to address  
dog-walker issues on  
conservation lands*





# Presentation Outline

- Backstory
- Research & Campaign Design
- Volunteer Training and Reporting
- Program Launch
- Preliminary Results
- Key Takeaways
- Next Steps

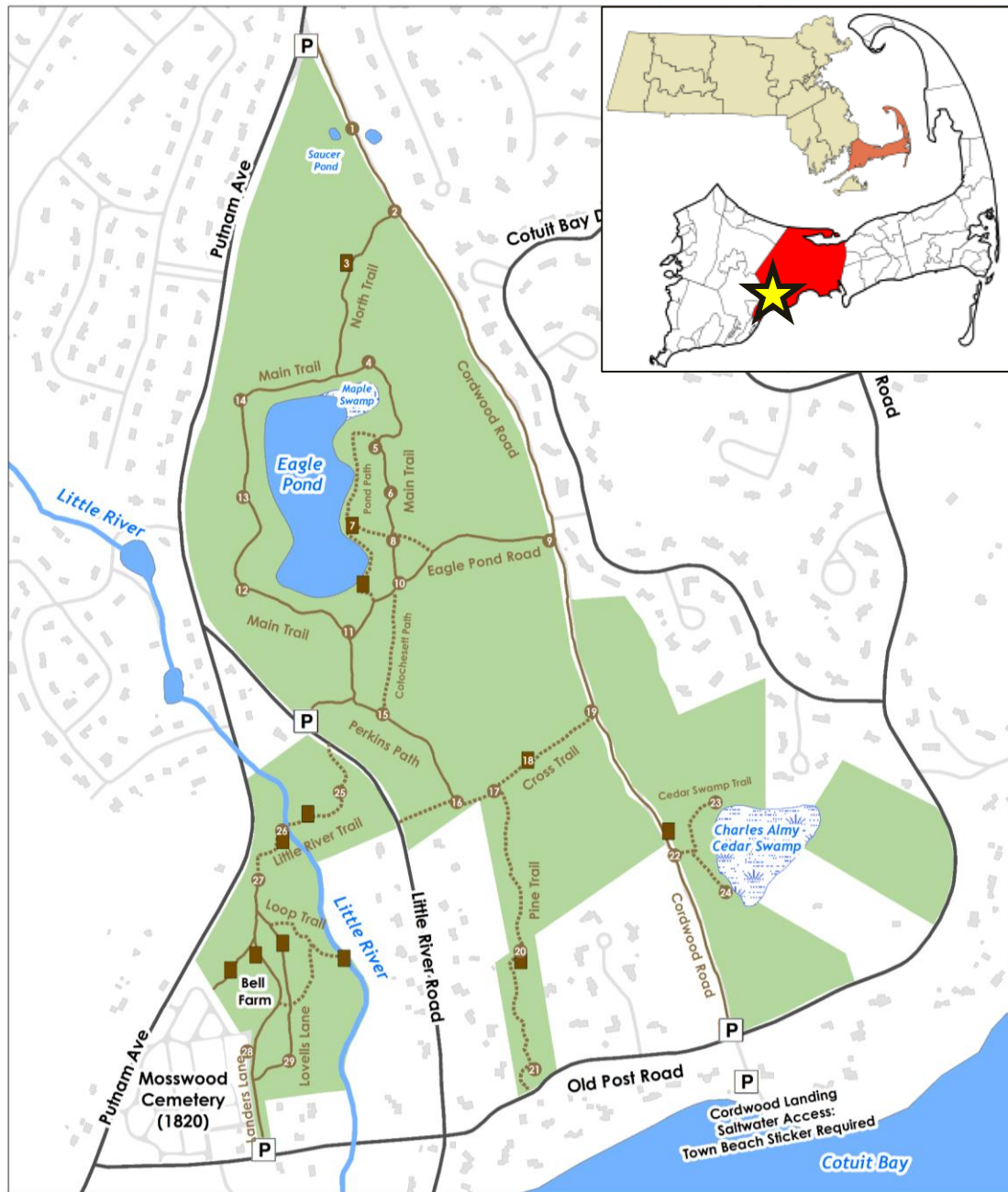


# Backstory: Eagle Pond & Little River Sanctuary

- 182.5 acres – 4mi trail network
- **40+ years** of public access
- Average **2 reported dog bite** incidents annually
- **Multiple complaints** to BLT annually over phone and in person about dogs off-leash and dog waste

## Previous Efforts

- **Periodic efforts by previous land trust owners** to engage with visitors on dog waste concerns
- **Signs posted at all trail entrances** to leash and pick up after pets
- **Mutt Mitts and disposal bins provided** at two high traffic areas



# Research

**Seven years in land trust network** hearing dog issues raised/discussed frequently with no clear solutions

**Three years in BLT role** conducting passive observation, engaging with visitors with and without dogs, receiving calls/complaints/pleas for action, etc...

*“I’ve been walking here for 30+ years.”*

Paper trail and discussions of observations/efforts from **previous land trust owners**

Sought input from regional land trusts. Preliminary success story from **Westport Land Conservation Trust.**

**Barnstable Police allows/encourages BLT to call to issue a trespass for noncompliance with posted rules.**

# Initial Steps Needed – Approaching Campaign Design

**Dec 2021:**

**Enough is Enough** – Staff/Land Stewardship Committee Discussions; Begin Design for Campaign Proposal

***Initial concerns:*** BLT already highly visible and under public scrutiny around Twin Brooks golf course

**Key Action Item: Submit proposal from LSC to BLT Board; Hope for approval**

**Dec 2021 to**

Discussions within LSC meetings, including special meeting

**Mar 2022:**

in March

**April 2022:**

Proposal submitted to and **APPROVED** by BLT Board of Directors

# Campaign Design

## Communications: Public/Website/Social Media

- **Learn.Leash.Lead** Campaign Title to inspire education, awareness, and taking the lead
- **Informational Brochure** for in office and on-the-trail
- Speak at **Cotuit Civic Association** Board and Public Meeting
- Presence in Cotuit Currents (Civic Association **monthly newsletter**)
- Information on **BLT Website**
- Inclusion in BLT E-news on campaign and **call for volunteers**
- **Social Media Series** for duration of campaign – Share on Cotuit Connections Facebook page

## On the Ground – On the Trails

- **Timeline:** Runs week of July 4<sup>th</sup> through last week of October (reach seasonal and year-round visitors)
- Call for Volunteers **flyer posted at trailheads**
- **Call for Volunteers** within BLT pool
- Volunteer **Training/Orientation**
- **Volunteer 'Kit'**
- **Shift-SignUp** System
- **Reporting** System
  
- **Incognito observational period** prior to launch

# Dog Information

Barnstable Land Trust properties that allow leashed dogs:

- Fuller Farm
- Andrews Property & Coombs Bog
- Ropes Field
- Lowell Park Woodlands
- Eagle Pond and Little River Sanctuary

[Print the Learn.Leash.Lead pamphlet](#)

Walk, don't run.

Looking for places to let your dog run off-leash?



Here are 4 nearby dog parks where your dog can run and have fun.

**Barnstable Dog Park**  
1431 Phinneys Lane, Barnstable

**Falmouth Dog Park**  
257 Brick Kiln Rd, East Falmouth

**Mashpee Dog Park**  
156 Ashumet Road, Mashpee

**Yarmouth Dog Park**  
452 Buck Island Road, West Yarmouth

Honoring the Past, Protecting the Future

Inviting dogs to enjoy our trails with their owners is a privilege that many people appreciate. Thank you for understanding why our **Learn.Leash.Lead** campaign is so important to ensuring these rules are honored, and that this privilege is not abused.



For questions, comments, or to volunteer to support this campaign contact:  
Kelly Barber, Director of Land Stewardship at [kelly@blt.org](mailto:kelly@blt.org) or 508-771-2585 x 102.



*Barnstable Land Trust is a community-supported nonprofit whose mission is to preserve the natural resources and special places in the Town of Barnstable and nearby areas. Visit [blt.org](http://blt.org) to find out more.* 2023



**Did you know?**  
Even if your dog is friendly, not everyone will feel safe in their presence. By keeping your dog leashed, you are helping keep Barnstable Land Trust properties safe for everyone to use.



1540 Main Street, West Barnstable (508) 771-2585  
[www.blt.org](http://www.blt.org)

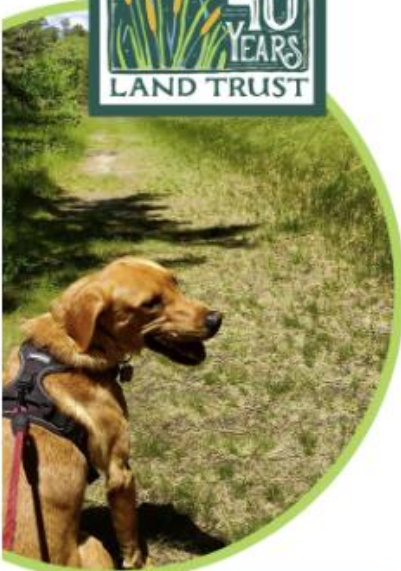
LLL Social Media Campaign Posts

Social Media Fast Facts



Learn.Leash.Lead

BLT Webpage

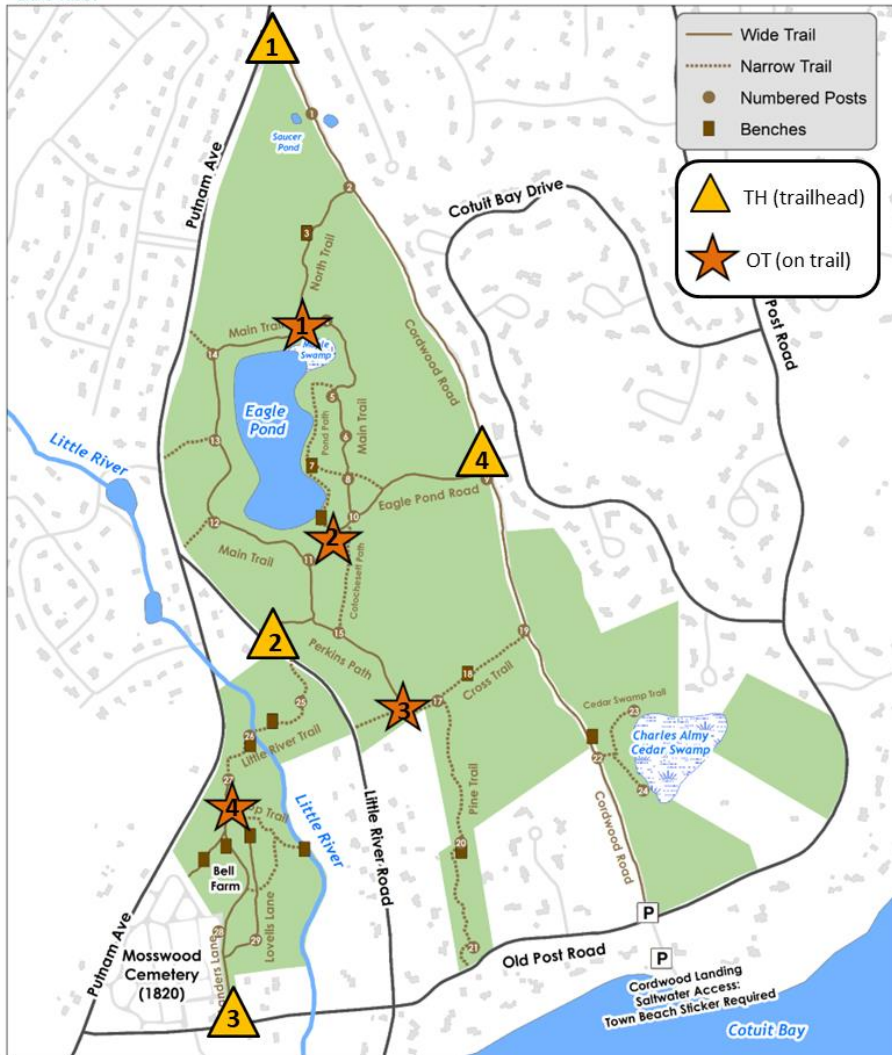


Learn.Leash.Lead

*Be part of a campaign to keep our historic trails clean, green, and serene.*



## Trail Monitoring Stations for Eagle Pond and Little River Sanctuary



## On the Ground – On the Trails: Structure

**Objective:** Create an engagement structure that does not draw a lot of time from staff/volunteers but has a high likelihood for positive impact towards end goal

**Goal:** Observe measurable improvement in dog-leashing and possible waste removal

**Operating Timeline:** July – October (18 weeks)

**1hr shifts targeting peak dog-walking times**

**Shift Availability:**

- Wednesdays 8-9am; 4-5pm
- Thursdays 8-9am; 4-5pm
- Saturdays 8-9am; 12-1pm; 4-5pm

**Volunteer Roles**

- **Stations:** Volunteers at stations in pairs to engage with any/all visitors
- **Walking:** Volunteers can walk trails independently, engaging with visitors as they feel comfortable

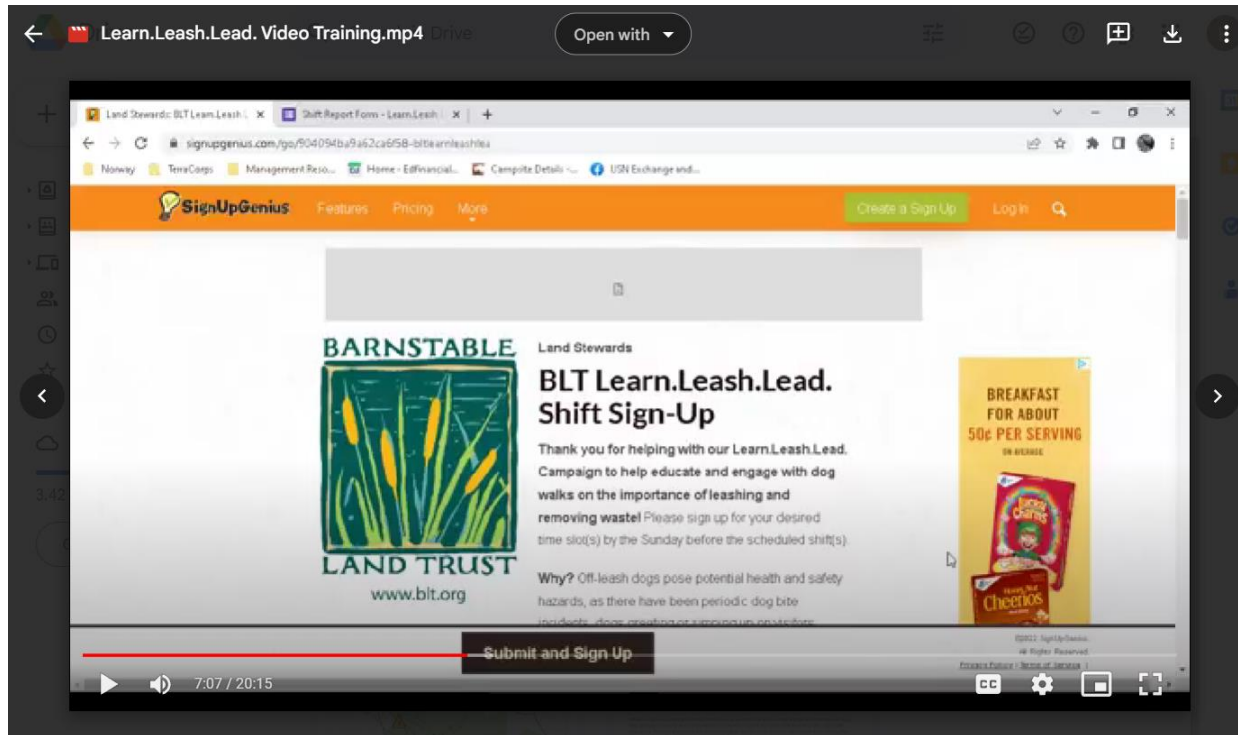
# Volunteer Training

## Volunteer Training Formats:

- June 2022: Hybrid 1hr session (In-person / Zoom session)
- During Program: 20min Video Recording with follow-up conversation with BLT rep

## Training Content:

- **Thank You**
- History of Issue and Objective of Program
- Setup of Shifts and Provided Volunteer Materials
- Shift Structure/Requirements; Signing Up; Reporting
- Volunteer Code of Conduct
- Communication Tactics and Sample Interactions
- Weekly Communications from BLT
- **Thank You**





Barnstable Land Trust – Eagle Pond and Little River Sanctuary  
Training Guide for Learn.Leash.Lead. Volunteers

**Background and Campaign Purpose**

Eagle Pond and Little River Sanctuary has been a popular place for people to walk and for visitors with dogs to walk their dogs. It has only grown in popularity over the decades, and as such there has been an observed increase in off-leash dogs and dog waste left behind. Eagle Pond and Little River Sanctuary is 182.5 acres with a 4-mile trail network throughout. Originally protected by Mary Barton Land Conservation Trust, full ownership and stewardship was transferred to BLT in 2011.

In speaking with users on trails, there is a clear community value for people to be able to bring their pets on trails. There are many responsible dog owners that leash and pick up after their pets, but there are also many visitors that ignore or are not aware of these rules. Eagle Pond and Little River Sanctuary was primarily conserved to protect sensitive wetlands and provide vegetated buffer to Eagle Pond and Little River while providing an area for people to passively connect with nature.

Off-leash dogs pose potential health and safety hazards, as there have been periodic dog bite incidents between dogs, dogs greeting or jumping up on visitors without permission, frequent dog waste left behind, and other unpleasant encounters. There are also visitors that are fearful of dogs, and the risk of encountering a dog off-leash is enough for them to avoid visiting the sanctuary. Dog waste can pose a serious health hazard as it can contain bacteria hazardous to dog, human, and wildlife health on the ground, and potentially leach into our watershed, polluting water bodies, groundwater, and shellfish beds. It is also high in nitrogen and phosphorous, which kills vegetation instead of helping it grow, damaging the valuable wildlife habitat we have protected and further threatening clean water.

Over the years, we have received many comments from people with and without dogs who have stopped visiting due to off-leash dogs and negative dog-related experiences. It is important for BLT to restore the sanctuary as a place where visitors feel welcome and safe. There have been many observations and reports of dog owners refusing to follow posted leash rules as if the rules should not apply to them. BLT needs to remind these visitors that noncompliance with the rules will not be acceptable and consequences, such as being instructed to leave the sanctuary, may result from refusing to follow posted rules. If BLT does not see improvement in rule compliance throughout this campaign, we may have to make the difficult decision to no longer allow dog walking at the Sanctuary.

**Your Role:**

Thank you for volunteering to engage with visitors of the sanctuary. Our purpose is to positively engage with and educate visitors. There is the opportunity to improve compliance with the rules that apply to dogs, if you feel comfortable, but our main purpose is to represent Barnstable Land Trust in a positive manner, communicate the concerns of visitors, and constructively educate visitors on why our posted rules are in place. Your help is crucial, and we greatly appreciate you.

# Volunteer Training Guide

**Content:**

- Background and Campaign Purpose
- Your Role [as a volunteer]
- Time Frame [for 2022 campaign]
- Shift Structure and [how to] Sign-Up [links]
- Trail Monitoring Station Map
- [Materials] Volunteers are Provided With
- Reporting [Process and Form Links]
- **Rules of Conduct**
- **Steps for Rule Enforcement**
- **Suggested Language for Potential Scenarios**
- Thank You Acknowledgement
- Kelly Barber Contact Info



# Volunteer Rules of Conduct

- Volunteers will **only operate in pairs**.
- Volunteers will always **greet individuals in a positive and friendly manner and will maintain calm composure**.
- Volunteers are **encouraged to engage with compliant walkers** and thank them for leashing dogs and being prepared to pick-up after them (if dog bags are observed).
- Volunteers must **always wear their vests and name badge**.

## Do...

- **Represent BLT in a professional and positive way.**
- **Listen** to the visitors' comments and concerns.
- **Be respectful** when listening to a visitor's comments, no matter how inflammatory.
- **Acknowledge and thank** visitors who are following the rules.
- **Be aware of body language**, keep an open position
- **Look the visitors in the eyes** when speaking to them.

## Do Not...

- **Blame, speculate, or use inflammatory language.**
- **Interrupt a visitor** when they are giving their comments or concerns.
- **Raise your voice.**
- **Escalate the situation.** If you start to feel upset, take three deep breaths, thank the person for visiting and have them continue on the trail.
- **Have defensive body language**, do not cross arms
- **Wear sunglasses** while speaking to visitors

**Remember!** You are a representative of Barnstable Land Trust. We must maintain a cool, calm, and collected composure and engage with people positively, no matter if their attitude is different. All personal opinions must be kept to yourself unless they represent the opinions of BLT outlined here.

# Steps for Rule Enforcement

1. **Observe the infraction** (ex. dog off leash, dog waste not picked up)
2. **Engage with the owner positively**, greeting the owner and dog. Identify yourself as a BLT volunteer
3. **Transition content in conversation** to remind them to leash and/or pick up waste (whatever infraction was observed). Explain why it is required by BLT and that having dogs is a privilege and may be removed if we do not see everyone leashing and picking up after pets.

**Continue with the following steps only if you feel comfortable. The conversation can be ended at each step.**

1. **Optional:** If the owner refuses to pick up waste or leash pet, **owner will be asked to leave:**
2. **Optional:** If the owner refuses to leave, **volunteers may call the police** and request they arrive to issue a trespass on the individual. The individual must still be present when police arrive for a trespass to be issued.

**Note: If individual proceeds to leave at any point, volunteers will not follow the individual to ensure they have left. This may escalate the situation.**

# Suggested Language for Potential Scenarios (Examples Drawn from Guide)

**Greetings:** If dog on-leash/off-leash; If owner observed removing pet waste/leaving pet waste behind

## Follow-up

- Summary of reasons for Why do dogs have to be on leash?; Why must dog waste be removed?
- If owner becomes defensive; If owner refuses to leash pet/remove waste; If visitors does not agree to leave

## Common comments you may receive and how to respond

- “My dog is well-trained. S/he stays by my side and listens when I call him/her.”
- “My dog needs to run free.”
- “My dog is friendly.”
- “I have been walking here for XX years.”
- “I am a BLT member.”
- “This has been allowed for years. Why the sudden change?”
- “Dog poop will just dissolve. It is a part of nature.”

# Volunteer Materials Checklist

## Attire

- ✓ BLT Volunteer Vest
- ✓ BLT Volunteer Name Tag

## Clipboard Contents

- ✓ Volunteer Training Guide
- ✓ Laminated Trail/Monitoring Station Map (Rear: Snapshot Fast-Fact and Code of Conduct reminders and Key Contact info)
- ✓ Notepad
- ✓ Fast Tally Paper Report Forms (if desired)
- ✓ Laminated Detailed Reporting Guide (double-sided)
- ✓ Eagle Pond & Little River Sanctuary Maps
- ✓ Learn.Leash.Lead Brochure
- ✓ Kelly Barber Business Cards
- ✓ Dog Poop Bags
- ✓ Pens



# Shift Sign-Ups and Reporting

## Shift Signup through

- Volunteers Sign up by Sunday of the week



## Weekly Emails

- Assigning volunteer sign-ups to stations and sharing any gaps in partners

## Reporting

- Online Reporting through Google Forms (due within 1 week of shift)

## Reporting Measures

### Observations

- Visitors observed (total, w/ dog, w/o dog; with dog – on-leash, off-leash)
- Visitors observed carrying out dog waste
- Dog waste observed along trail (bagged; not bagged)

### Engagement

- Document interactions with any and all visitors engaged with
  - Examples of reporting summary provided for each

### Enforcement

- Document conversation if visitor asked to leave and if police were called to issue trespass

**Launch!**



### Eagle Pond

Eagle Pond & Little River Sanctuary  
100.5 acres • Concord, MA

**Background**  
Eagle Pond is a 600-ft long, 100-ft wide pond in the center of the 100-acre sanctuary. It is a high quality water body with a maximum depth of 10 ft.

**Wildlife**  
Pond wetlands, surrounding forest and riparian habitat are home to a variety of birds, including mallards, blue jays, and herons. The sanctuary is also home to a variety of plants and animals, including the pond's resident muskrats and beavers.

**The Pond**  
The pond is a natural feature of the sanctuary and is a vital part of the ecosystem. It provides a habitat for a variety of wildlife and is a popular spot for visitors to enjoy.

**The Eagle Sanctuary**  
Designed by the late Peter Dinklage, the sanctuary is a 100-acre natural area in Concord, Massachusetts. It is a beautiful and peaceful place to visit and enjoy nature.

**As a Park, please...**

- Keep your dogs on a leash.
- Respect wildlife and natural resources.
- Take only pictures, leave no trace, and respect private property.
- Understand that the sanctuary is only open between dawn and dusk and entry is at your own risk.

# Program Duration — Progress, Communications, and Challenges Along the Way

**Start:** Focus on improving leashing and visitors becoming familiar with our presence and care

**18 Weeks of Implementation:** Weekly emails of shift-signups, shift partner needs, relevant observations/feedback if needed

- Included **Monthly reports** of data summaries/trends to Volunteers

**Mid-Season Meetup end of August** seeking feedback

- Review of general trends with volunteers
- Positive general impressions from volunteers; Volunteers feeling motivated; *Complimented structure of program as set up for volunteer safety/comfort and positive community impression*
- Volunteers recommend increasing shift availability to reach more visitors - Changed shift structure as a result
- Encouraged recruitment of regular visitors as volunteers

## Challenges

- **Town:** No support from Town Animal Control
- **Volunteers:**
  - Following up to get reports in timely and to sign up for shifts
  - QA/QC of Data

# 2022 Results

**Implemented By:** 11 volunteers, 3 service members, 2 BLT staff

## Overall Takeaways:

- **Quantitative:** Data holds little weight based off of small samples; Good for snapshot of conditions

	June	July	August	September	October	Totals
# Visits by Volunteers	6	12	11	15	4	48
Total Visitor Encounters	41	109	79	98	28	355
% Visitors w/o dogs	63%	50%	42%	54%	57%	51%
% Visitors w/ Dogs	37%	50%	58%	46%	43%	49%
%Visitors w/ dogs on-leash	53%	85%	76%	78%	58%	76%
%Visitors w/ dogs off-leash	47%	15%	24%	22%	42%	24%

- **Qualitative:** Observed behavioral improvements in repeat individuals; Positive interactions with public and appreciative comments

*The greatest outcome of this campaign was the increased visibility and community awareness of Barnstable Land Trust*



# Additional Takeaways and Tips for Success



**Positive behavioral change can happen** with limited staff/volunteer time (**84 total hours** – 58 volunteer; 36 staff/service member)

**Social Media is a support tool**, but in-person interaction is the most critical element

## **Tips for a Successful Program:**

- **Positive presence** when engaging members of the public
  - Be a dog ally/friend
  - Be welcoming, caring, and patient
  - Have a 'benefit of the doubt' attitude
  - Stay cool, calm, collected
- **Pair structure for volunteers is best**
  - Camaraderie
  - Safety
  - Teamwork
  - Accountability
- **Communicate your results with your volunteers.** Encouragement, appreciation, and reminding that they are making a difference, no matter how small, is key.
- **Community Support:** From Town officials and 'peer enforcers'

# 2023 – Program Continuation and Expansion

**Continuation:** Year 2 of program at Eagle Pond & Little River Sanctuary  
Collect more data and incorporate more language on dog waste issues

**Expansion:** Add program to 3 other BLT trails where dog-walker issues are present or developing

### 2023 Timeline

Mid March	2022 Volunteer Input Meeting for 2023
End March -Mid-April	Trail Cameras - Review visitation/conditions at all 4 sites
End March	Signs posted at all sites informing of campaign, reasons for leashing/waste removal, recruiting volunteers
Mid-April	Volunteer Training/Review for 2023
May 1 - October 31	Campaign Duration
End of June	First Volunteer Check-In/Touch-Base 2023
End of August	Second Volunteer Check-In/Touch Base 2023
Mid November	2023 Wrap-Up/Review/Plan for 2024

**Momentum Builds Momentum:** Hope that our signs of success and ‘we survived the pilot’ will recruit more volunteers and public awareness/support



96 poops in 1ac area!

😊 Smiles for Stewardship.



😞 Frowns for so much dog poop!

# Questions & Discussion



**Leah McFarland**

Land Steward

Dartmouth Natural Resources Trust

[Leah@dnrt.org](mailto:Leah@dnrt.org)

508-991-2289



**Kelly Barber**

Director of Land Stewardship

Barnstable Land Trust

[Kelly@blt.org](mailto:Kelly@blt.org)

508-771-2585 x102

**Shameless shout-out to TerraCorps and the Buzzards Bay Coalition.  
We owe our careers to the experiences provided by these organizations.**