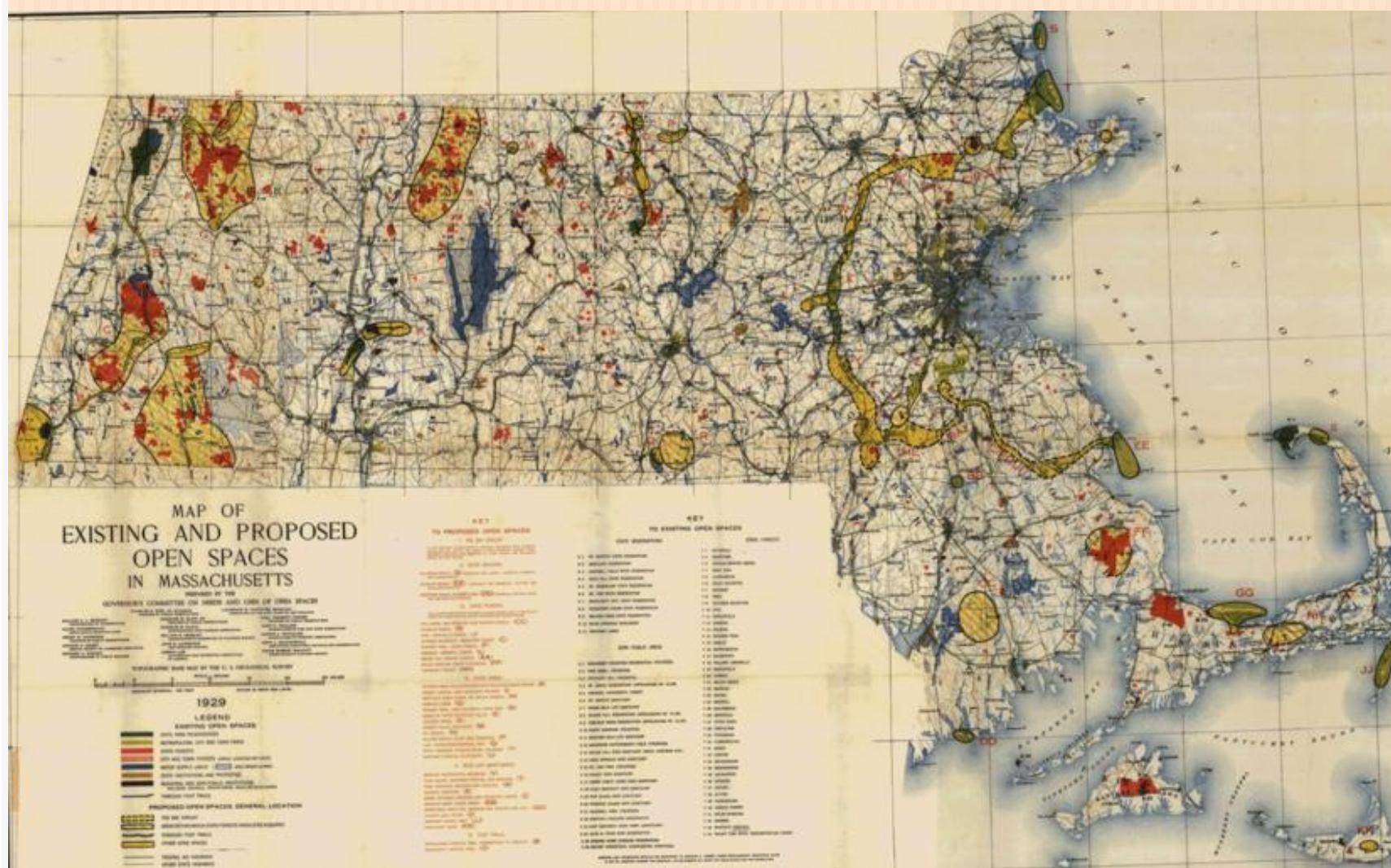


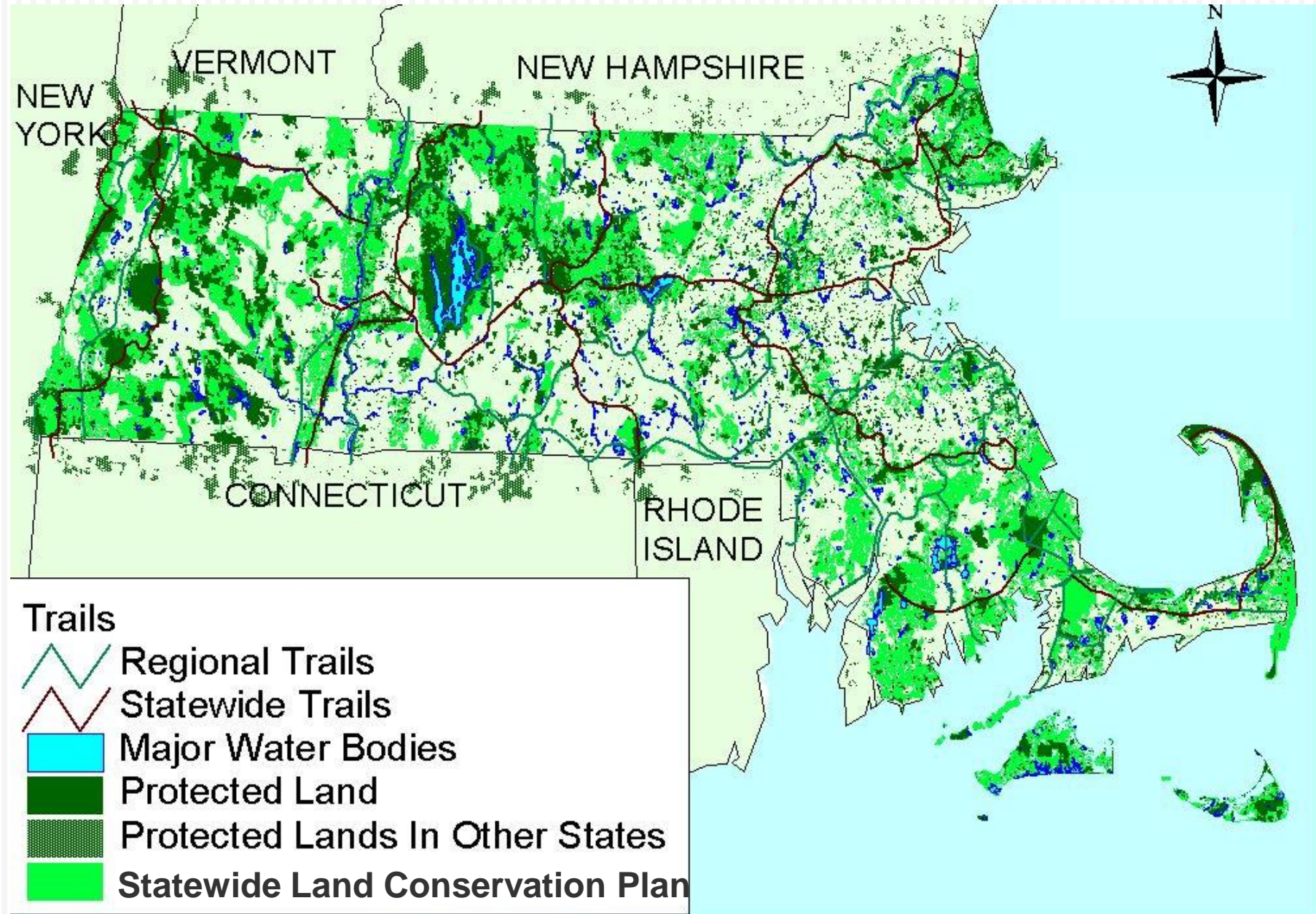
# LAND CONSERVATION – AN IMPORTANT CLIMATE SOLUTION



# 1929 Map of Existing and Proposed Open Spaces in Massachusetts

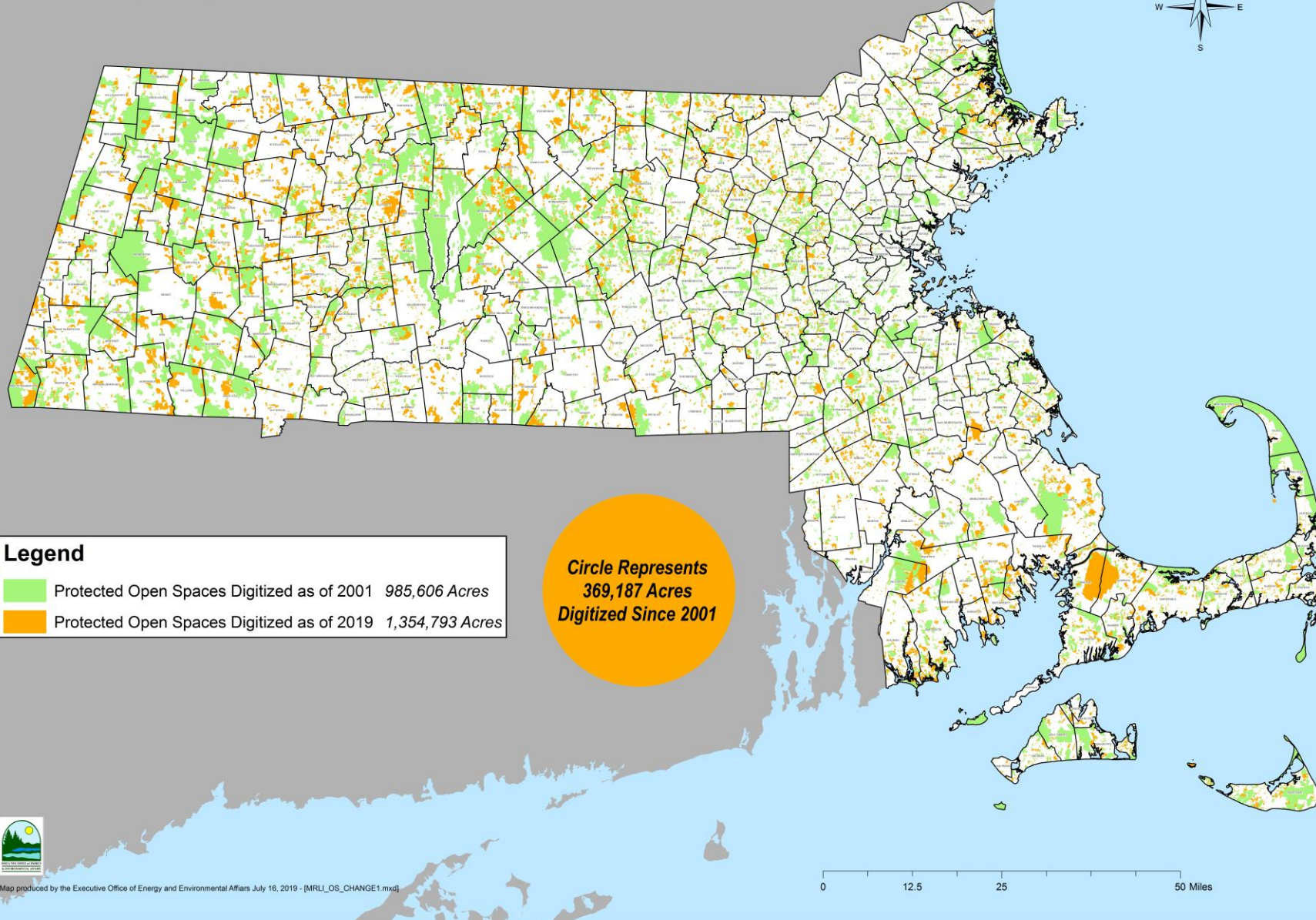


# The Statewide Land Conservation Plan - 2004





# Massachusetts Resilient Lands Initiative **DRAFT MAP**

## Protected Open Spaces 2001 - 2019



**Legend**

-  Protected Open Spaces Digitized as of 2001 985,606 Acres
-  Protected Open Spaces Digitized as of 2019 1,354,793 Acres

**Circle Represents  
369,187 Acres  
Digitized Since 2001**



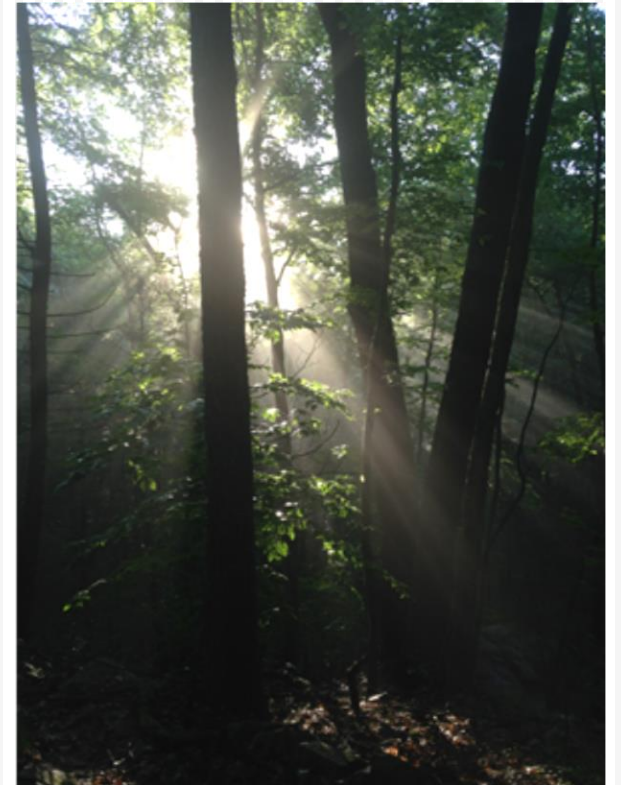
# 2001-2019 350,000 ACRES PROTECTED



Acres	350,000+
Projects	7,000+
State Investment	\$1+ Billion
Partner Leverage	\$770+ million
Quality of Life	450+ city parks and 7,000+ conservation areas
Health	3.5+ million new outdoor visits
Habitat	250,000 acres in Priority Habitat and BioMap2
Jobs	1,000+

# New Tools Added Since 2001

- Community Preservation Act (30,000 acres protected)
- Conservation Land Tax Credit (12,000 acres with \$14.6 million and a four times this amount leveraged in donations)
- Conservation and Landscape Partnership (130+ projects protecting 25,000+ acres)
- DWSP grants (3,600 acres with \$14.6 million)
- Working Forest Initiative (200,000 acres added to Forest Stewardship Program/Ch 61)
- Nation-leading landowner estate planning program
- 8 laws passed protecting 6,500 acres of state institutional land



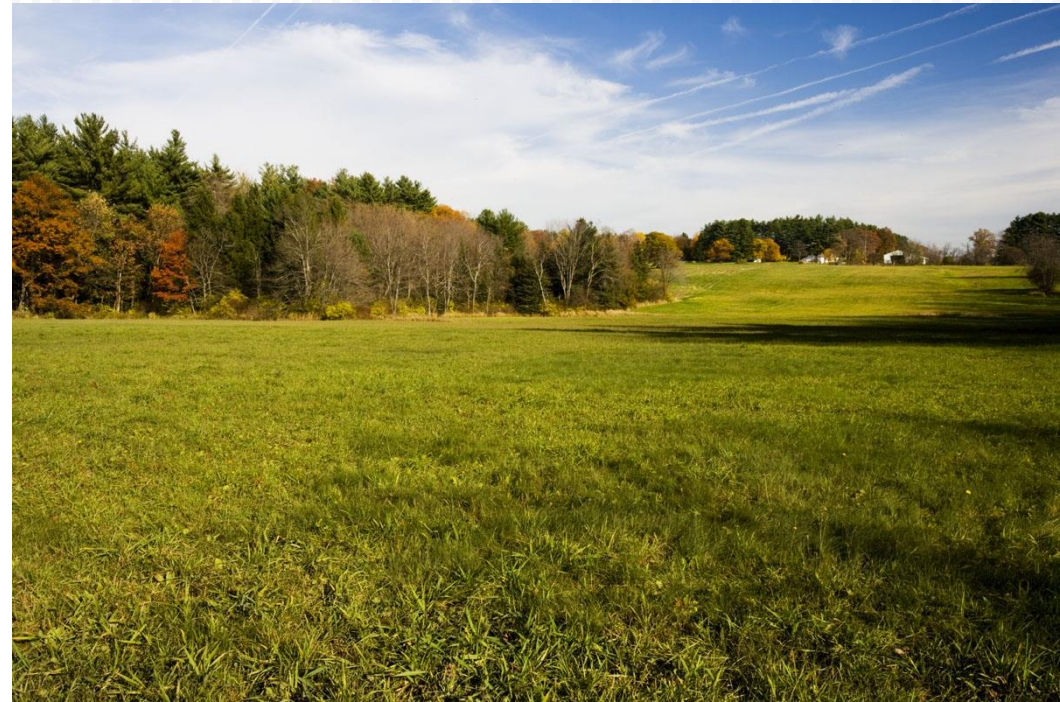
# Important New Issues Since 2001

- Climate change is happening with dire future projections
- A dozen regional land trusts have become the major non-profit project partners for land conservation projects
- The average age of landowners is near retirement – a huge transfer of land is occurring
- GIS and sophisticated modeling and mapping are available to nearly everyone
- There has been a sustained focus on the Gateway Cities
- Complex partnerships are the norm for most projects
- The need for more affordable housing crisis is even more critical



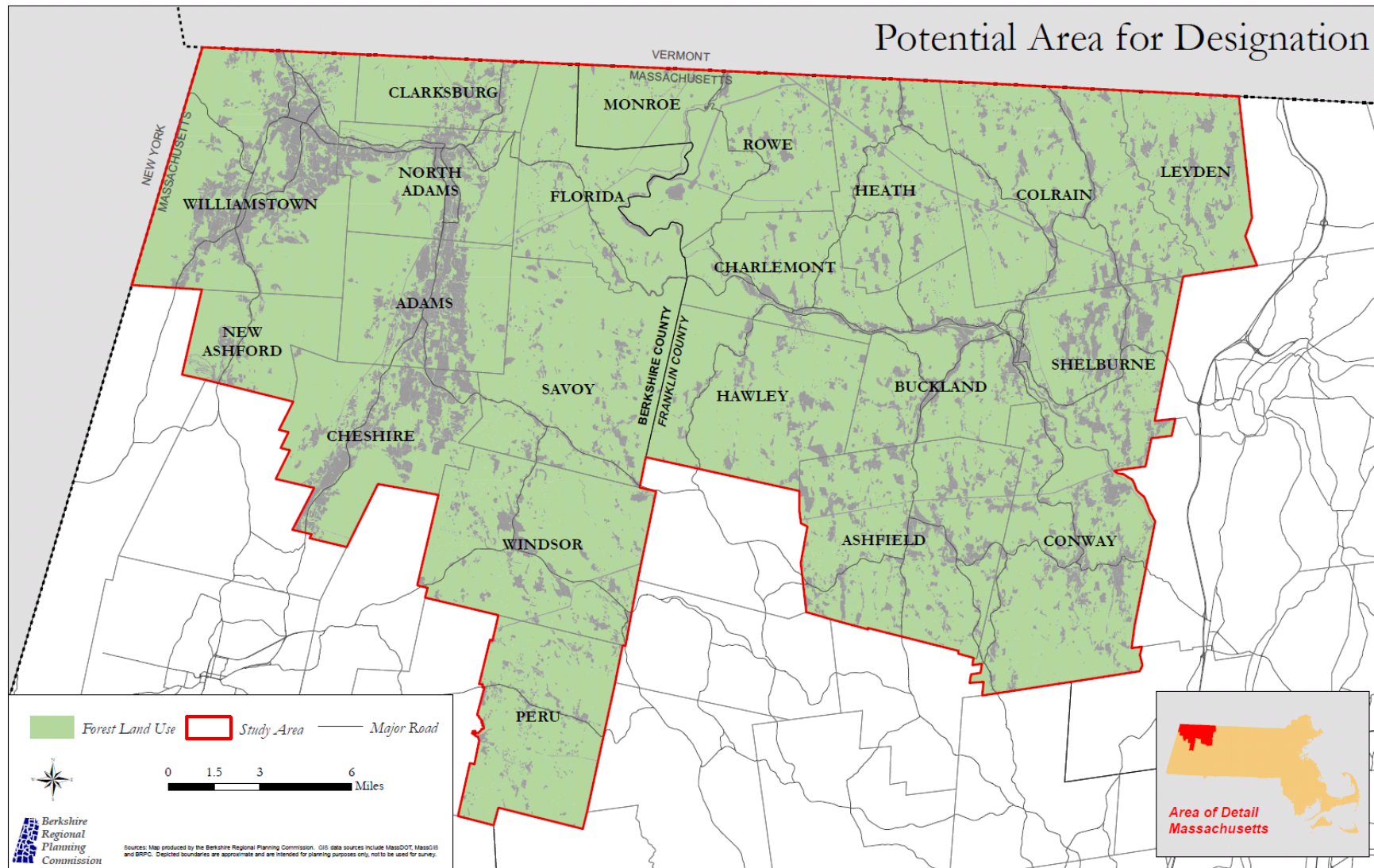
# RELEVANT RECENT PROJECTS

- Regional Priority Conservation and Development Plans (RPA's)
- Statewide Forest, Wildlife and Outdoor Recreation Plans
- Regional Conservation Plans (RPA's and Land Trusts)
- Municipal Vulnerability Plans
- Healthy Soils Statewide Plan (process underway)
- Global Warming Solutions Act "80X50" Project
- Rural Policy Plan (underway)
- Wildlands and Woodlands and Changes to the Land
- Greening the Gateway Cities Program (23,000+ trees)





# MTWP – A PRIVATE FOREST DESIGNATION WITH MULTIPLE PUBLIC BENEFITS - 2018



# COMMUNITIES FOR A SUSTAINABLE CLIMATE

New incentive program for reducing loss of carbon from open lands, encouraging smart growth and climate resilience.



Communities get incentives for new or infill development and projects for land carbon storage.



**GREENING THE GATEWAY CITIES  
– URBAN TREE PLANTING FOR  
CLIMATE RESILIENCE FOR  
PEOPLE**



“Even if I knew that tomorrow the world would go to pieces, I would still plant my apple tree.”

— **Martin Luther**

# CONNECTING RESIDENTS WITH NATURE



**Trees outside our windows are our first contact with the urban forest and a gateway to conservation – GGCP trees are within 50 feet of 25,000+ residents**

# PLANTING TREES TO IMPROVE HEALTH

Cleans the air – reducing asthma and cardiovascular diseases

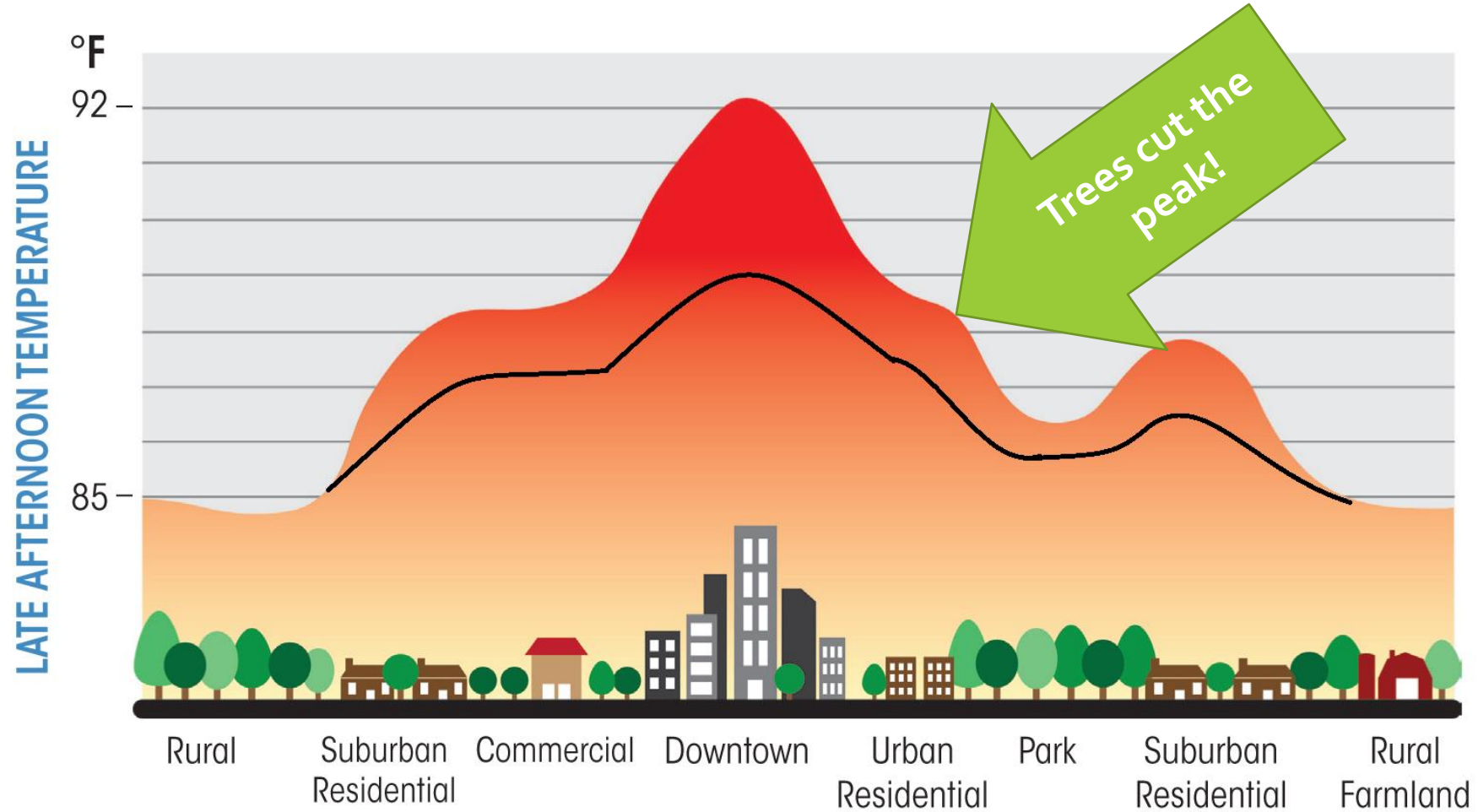
Cools the air – reduces impact of heat waves

Promotes exercise and reduces obesity

Improves mental health and reduces stress



# URBAN HEAT ISLAND EFFECT



# BROADENING THE CONSERVATION COMMUNITY

- Working with human service, gardening, affordable housing and conservation partners to customize the program in each community...
- New partnerships with Community Health Committees...





# HOLYOKE TREE NURSERY – TREES FOR THE FUTURE



# BENEFITS OF LAND TRUSTS PARTNERING WITH COMMUNITIES TO PLANT TREES

- Brings nature to new residents
- Creates new opportunities for land projects through goodwill
- Creates highly visible projects that show benefits of nature-based climate solutions
- Great way to expand programs to reach more people



# RESILIENT LANDS INITIATIVE GOALS

- An inclusive vision for land conservation in the climate change era;
- A compelling case for how land conservation can help communities and neighborhoods, especially to reduce the impacts of climate change;
- An Initiative that works on implementation over the ten years of the effort
- An initiative that links to other relevant efforts



# RESILIENT LANDS INITIATIVE PROCESS

- A diverse steering committee supported by EEA, UMDI, WPI, Conway and UMass with 12+ public input sessions
- Monthly Steering Committee meetings over a year with the integration of 8 focus topics including:
  - Farms
  - Forests
  - Wildlife Habitat
  - Water Supply
  - Parks and Public Health
  - Outdoor Recreation
  - \*Economic Stability
  - \*Climate Resilience
- A GIS model to rate projects value for Community Climate Resilience (Timothy Randhir, UMass, Amherst)



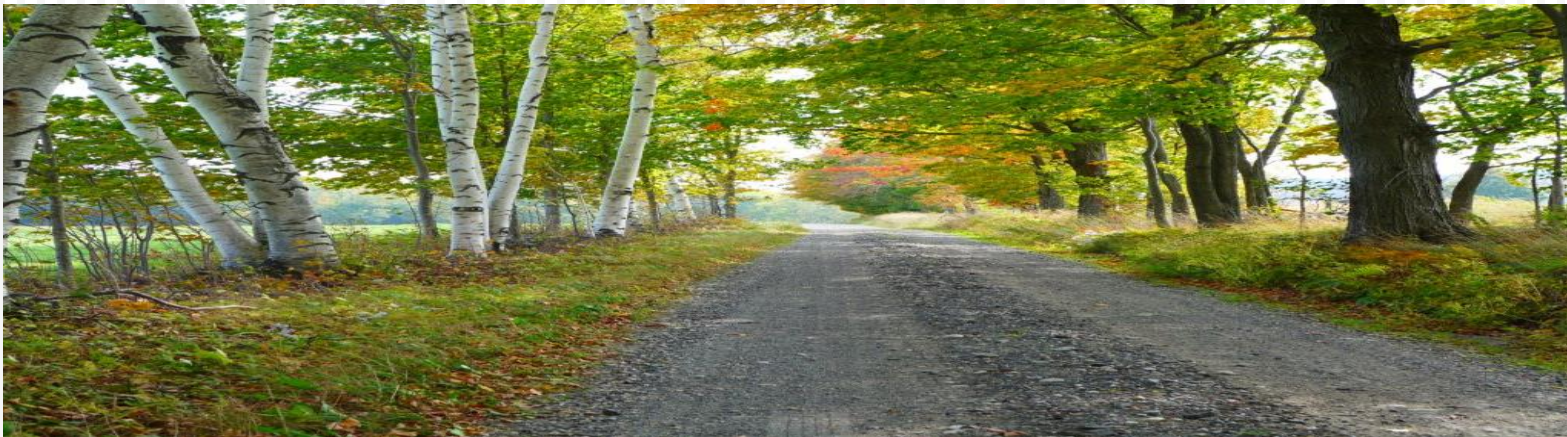
# POSSIBLE RESILIENT LANDS INITIATIVE MEASURES – BEYOND ACRES

- Visionary case study projects across the Commonwealth
- Vibrant and resilient rural communities and cities
- Healthy farming and forestry economies
- Equitable land-based public health benefits
- Number of local people fed and housed with conserved land products
- Amount of heat island reduced
- Amount of flooding potential reduced
- Amount of water supplies adequately protected
- Increased capacity of partners to conserve land



# Some Ideas Popular with the Steering Committee so Far...<sup>22</sup>

- No net loss of forests and farms with mitigation of “green infrastructure parks”
- Many “micro” forests and parks in cities via “Chapter 40 “Trees” and Ch 61 “Urban”
- Libraries as the gateways to the outdoors – loaning outdoor equipment
- DCR transit system – school buses take kids to parks on weekends and vacations



# Some Ideas Popular with the Steering Committee so Far...<sup>23</sup>

- Daylight streams for urban greenways and stormwater reduction
- Outdoor equipment sales tax dedicated to outdoor recreation (programming...)
- A cross laminated timber plant building our local buildings with local wood
- Health insurance pays Rx for park programs, fruit tree planting and care, etc.



# Resilient Lands = Resilient People





# YOUR RESILIENT LAND IDEAS? <sup>25</sup>

