



MASSWILDLIFE



US Army Corp of  
Engineers

## Landscape Scale Habitat Restoration Within a Flood Control Environment

*A Critical Partnership Between MassWildlife and the  
US Army Corp of Engineers*

# Birch Hill Complex

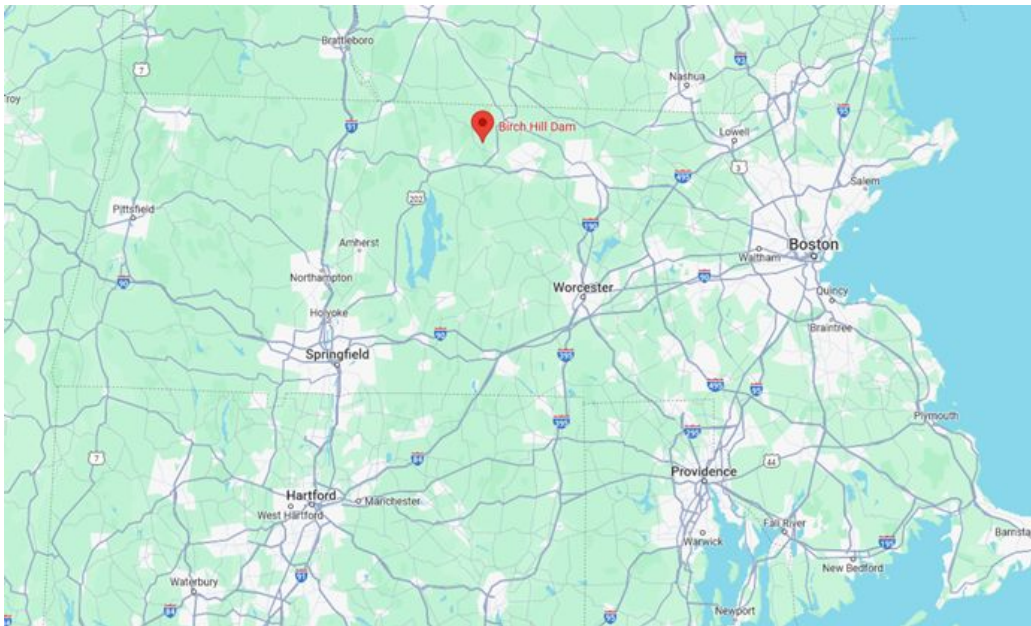
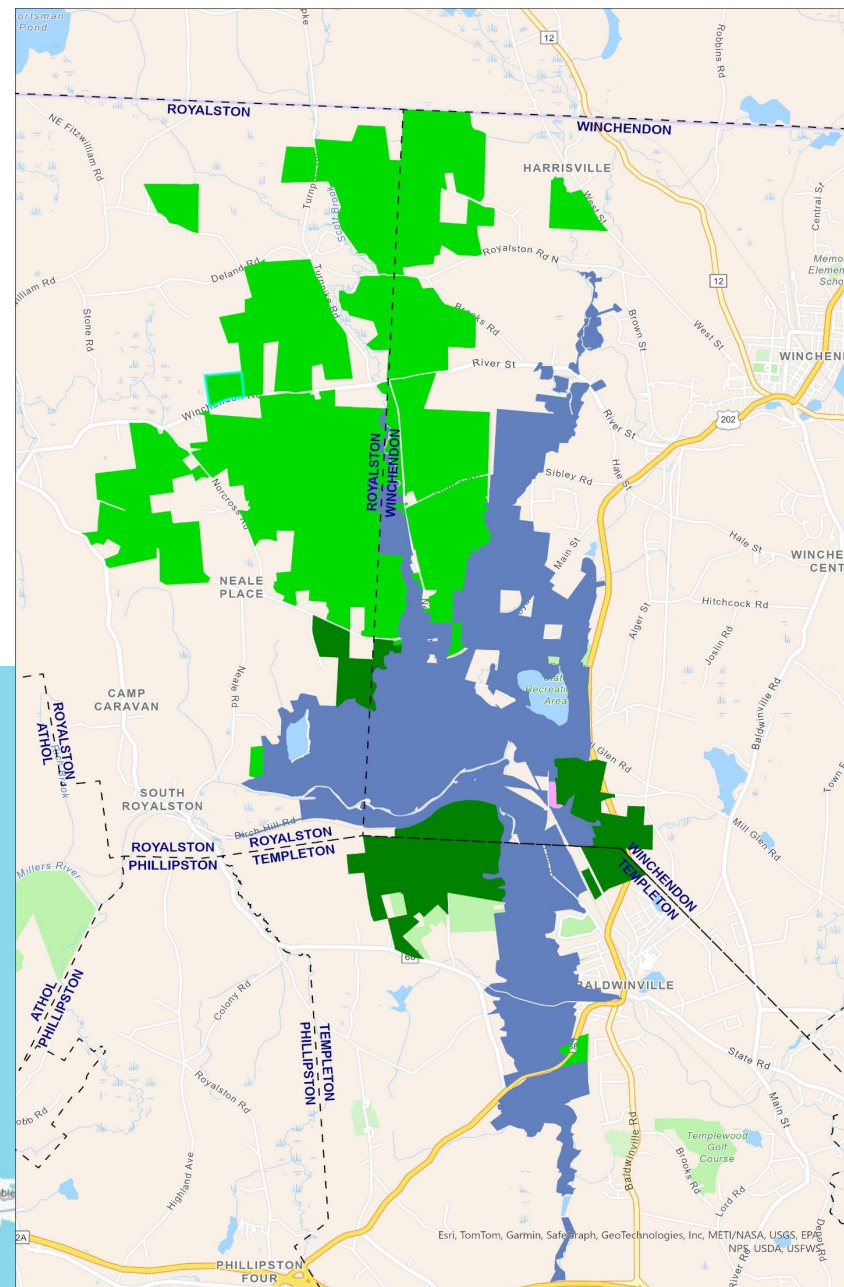
North Central Massachusetts

Towns: Royalston, Winchendon, Templeton

**4,384 Acres** -Army Corp Birch Hill Dam-ACOE

**4,500 Acres** -Birch Hill WMA-DFW

**1,019 Acres** -Otter River State Forest-DCR



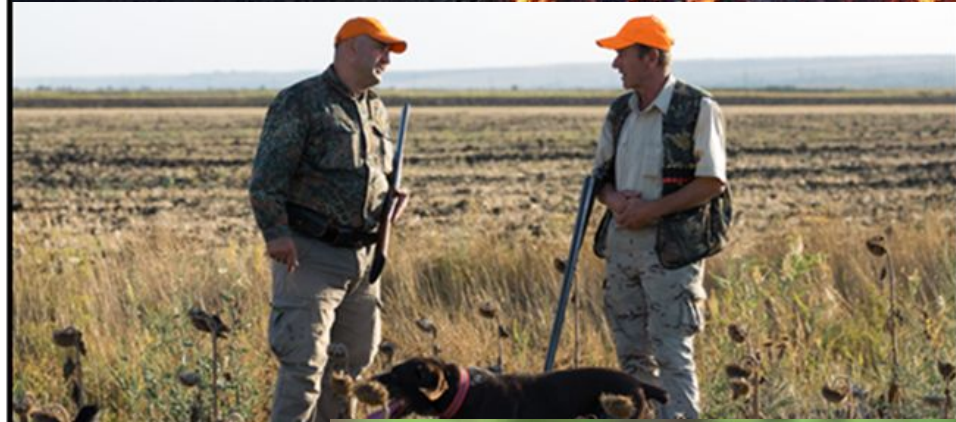
# Why Partner?

## Compatible Missions & History

### The Site & Habitat Restoration

#### Landscape scale habitat restoration

- Population scale management
- MESA and & important game species (ie: ruffed grouse)
- Fire influenced oak/pitch pine woodlands, barrens, young forest
- Complements existing habitat restoration on abutting WMA
- Provide outdoor recreation opportunities
  - Hunting, foraging, bird watching, hiking





- **140-acre initial timber harvest over 2 years**
- **Removed dying nonnative red pine plantations**
- **Eastern Whip poor wills (SC) return after 60+ year absence**

# Lessons Learned

## *“Often Through Unanticipated Events”*

Just because someone says NO doesn't mean its over

There are other users of the land

Learning each other's Work Languages



“The Ballfield”

“The Pond is at 7 feet”

# How the Partnership Evolves

- Annual Management Plan facilitates collaboration
- What worked
- What needs improvement
- Celebrate what was accomplished



# Questions



# What Made This Work

**Drive and Commitment**

**Continued support and  
reassurance**

**Just because someone  
says NO doesn't mean its  
over**





## Understanding Partners Missions



Primary purpose is Flood Control

- Dam completed 1942
- Prevent flooding w/in CT River Basin

Secondary purpose is Environmental Stewardship

- Army Corp see's habitat management & forestry as meeting this purpose



# *Why Partner?*

## *There's often a history*

1988 Lease for wildlife management

1980'-90's small onsite field office

- Stocked fish/pheasant
- Mowed fields

2009- 50 Acre Field Clearing For Bird Hunting

2011-Corp reached out to MassWildlife

