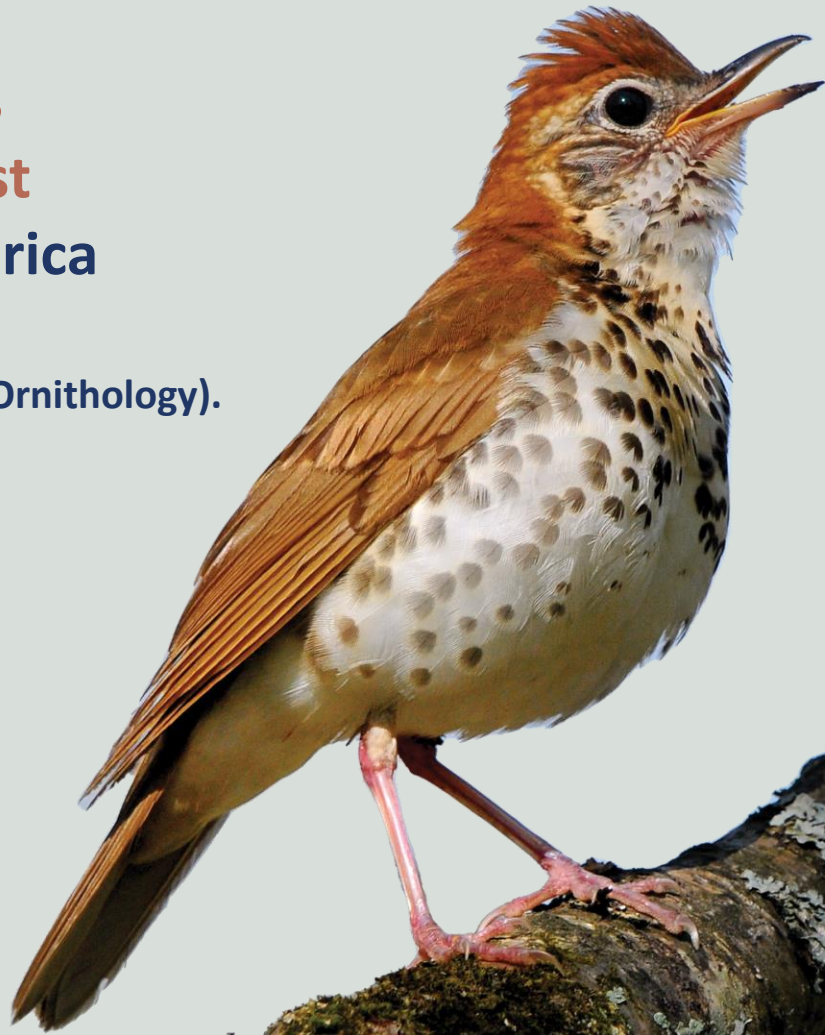




**3 billion birds
have been lost
in North America
since 1970.**

(The Cornell Lab of Ornithology).



**One third of species in
the U.S. are vulnerable
and one in five are at
high risk of extinction**

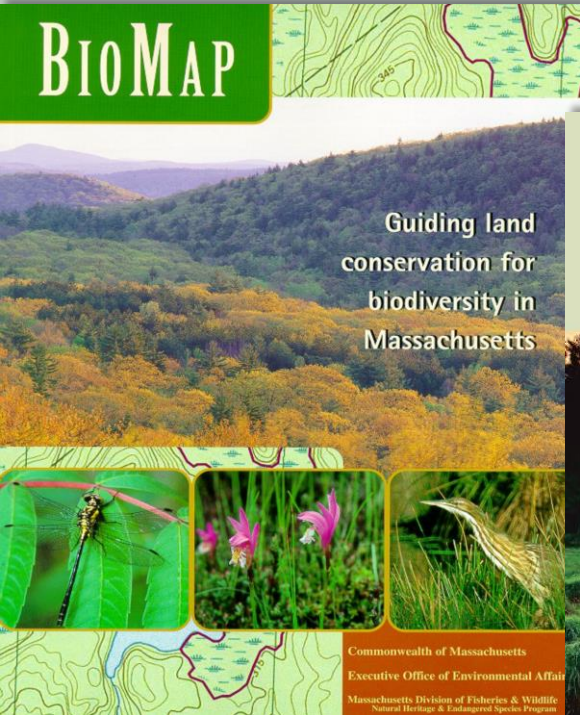
(National Wildlife Federation).

BIOMAP

The Future of Conservation in Massachusetts



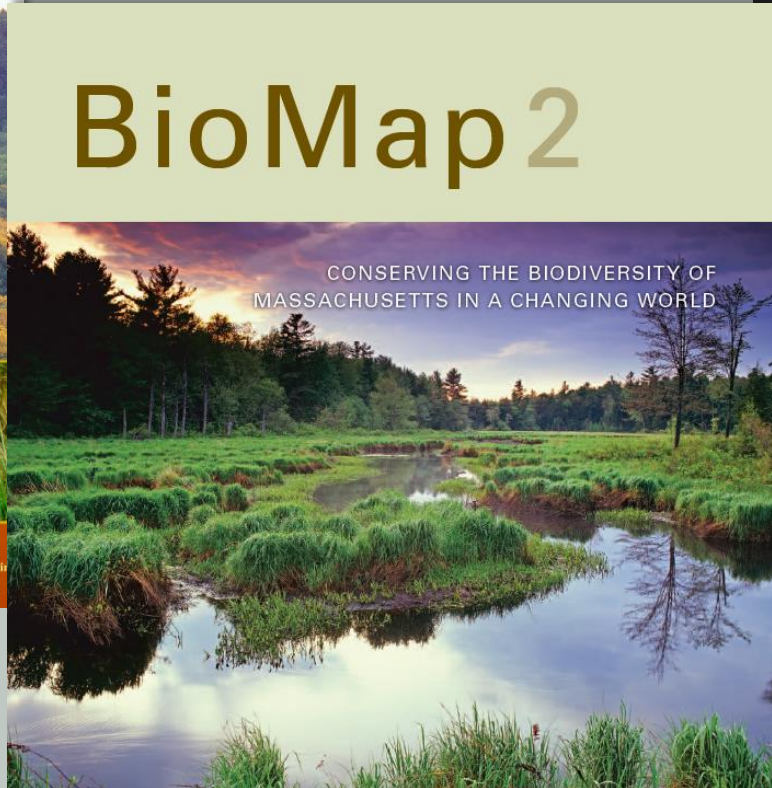
BioMap Over Time



BioMAP

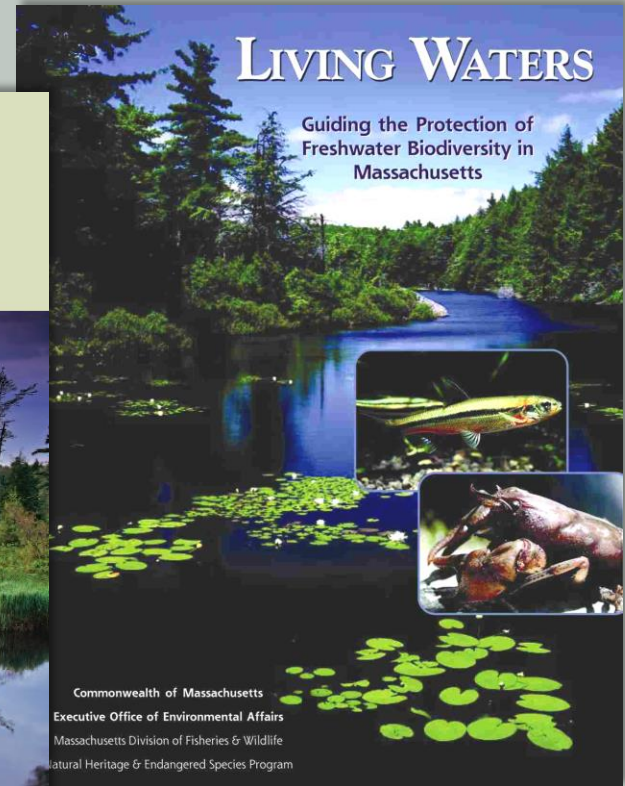
Guiding land conservation for biodiversity in Massachusetts

Commonwealth of Massachusetts
Executive Office of Environmental Affairs
Massachusetts Division of Fisheries & Wildlife
Natural Heritage & Endangered Species Program



BioMap 2

CONSERVING THE BIODIVERSITY OF MASSACHUSETTS IN A CHANGING WORLD



LIVING WATERS

Guiding the Protection of Freshwater Biodiversity in Massachusetts

Commonwealth of Massachusetts
Executive Office of Environmental Affairs
Massachusetts Division of Fisheries & Wildlife
Natural Heritage & Endangered Species Program



MASSWILDLIFE



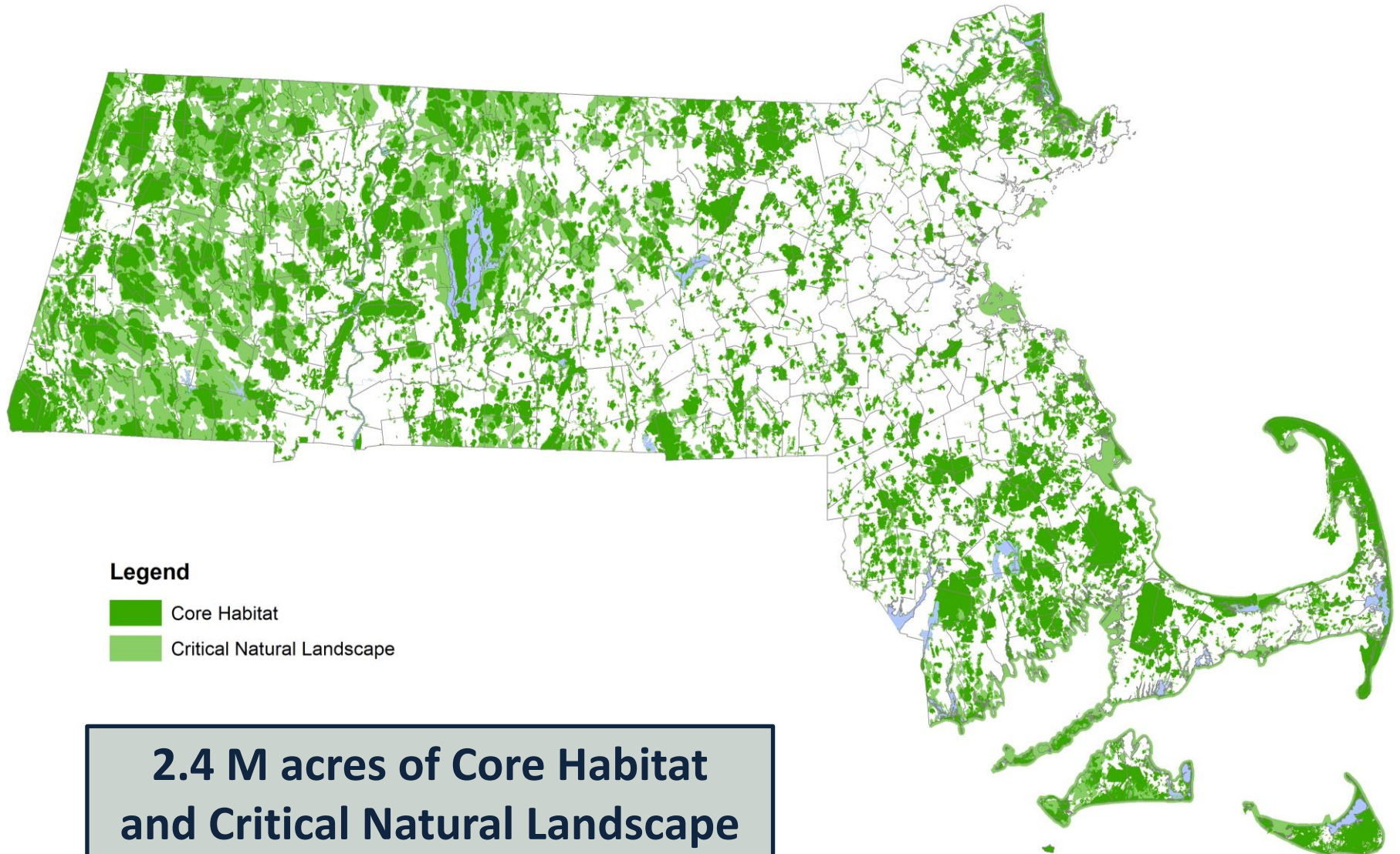
MA Department of Fish & Game | Division of Fisheries & Wildlife | Natural Heritage & Endangered Species Program • The Nature Conservancy

The Nature Conservancy 



A MAP. A TOOL. A VISION.

BioMap: A MAP





BioMap Components



Story Maps



What Is BioMap?

A Map. A Tool. A Vision



Core Habitat



Critical Natural Landscape

A Closer Look at Core Habitat Components

Core Habitat identifies key areas to ensure the long-term persistence of rare species, exemplary natural communities, and resilient ecosystems across the Commonwealth. Read more about each of the Core Habitat Components.



Rare Species Core

Areas critical to the long-term conservation of our most vulnerable species and their habitats.



Forest Core

The most intact forests, least impacted by development and essential for numerous animals and plants.



Aquatic Core

Intact rivers, streams, lakes and ponds supporting a diversity of species and physical and ecological processes.



Wetland Core

The most intact, least disturbed wetlands within resilient, less developed areas, with fewer stressors like pollution.



Vernal Pool Core

Clusters of ecologically significant and intact surrounding upland ensure connectivity between



A Closer Look at Critical Natural Landscape Components

Critical Natural Landscape (CNL) identifies large landscape blocks that are minimally impacted by development, as well as buffers to core habitats and coastal areas to enhance resilience. Read more about each of the CNL Components.



Landscape Blocks

Intact and connected forests, wetlands, rivers, lakes, and coastal habitat that sustain healthy countless species.



Wetland Buffers

Intact habitat surrounding Wetland Core that supports wetland functions and habitat connectivity.



Aquatic Habitat Buffers

Intact habitat surrounding Aquatic Core that supports aquatic functions and habitat connectivity.



Coastal Adaptation Areas

Areas adjacent to existing salt marshes that are most conducive to habitat movement as sea levels rise.



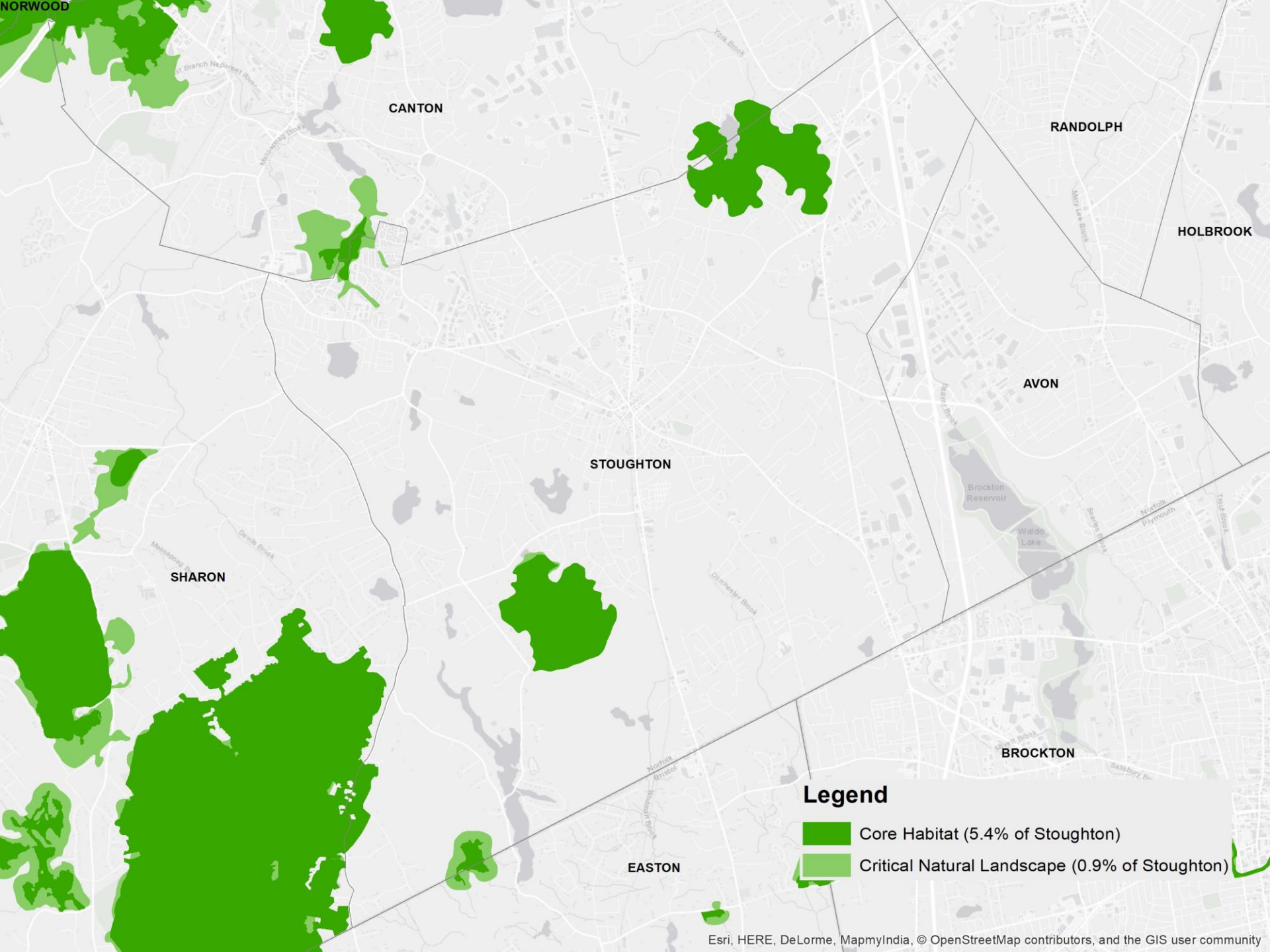
Tern Foraging Habitat

Offshore habitat used by state-listed Roseate, Arctic, Common, and Least Terns when feeding.

Fact Sheets



Local Habitats



CANTON

RANDOLPH

HOLBROOK

AVON

STOUGHTON

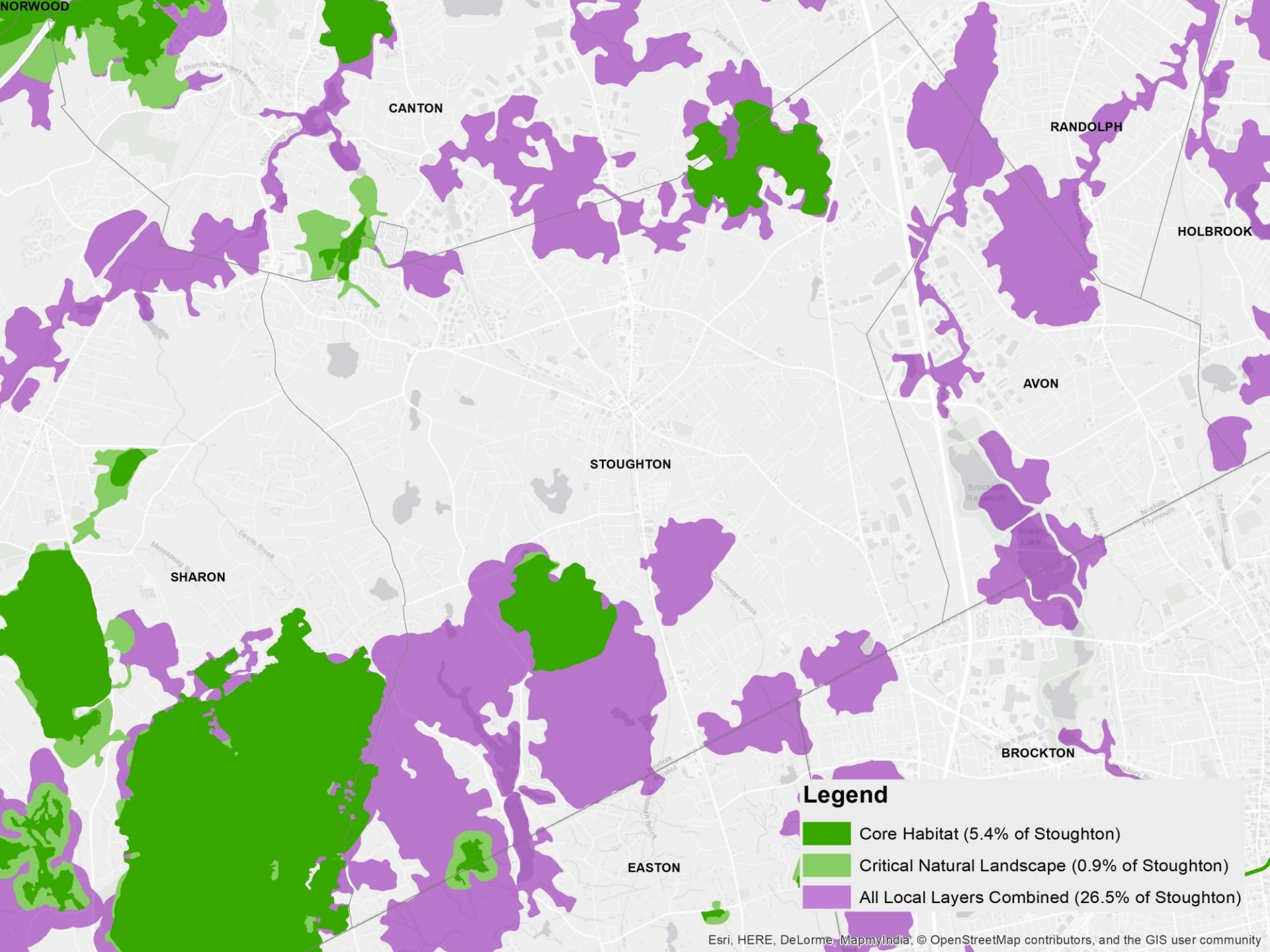
SHARON

BROCKTON




EASTON

Legend

- Core Habitat (5.4% of Stoughton)
- Critical Natural Landscape (0.9% of Stoughton)



Legend

-  Core Habitat (5.4% of Stoughton)
-  Critical Natural Landscape (0.9% of Stoughton)
-  All Local Layers Combined (26.5% of Stoughton)

Landscape Blocks



Landscape Blocks



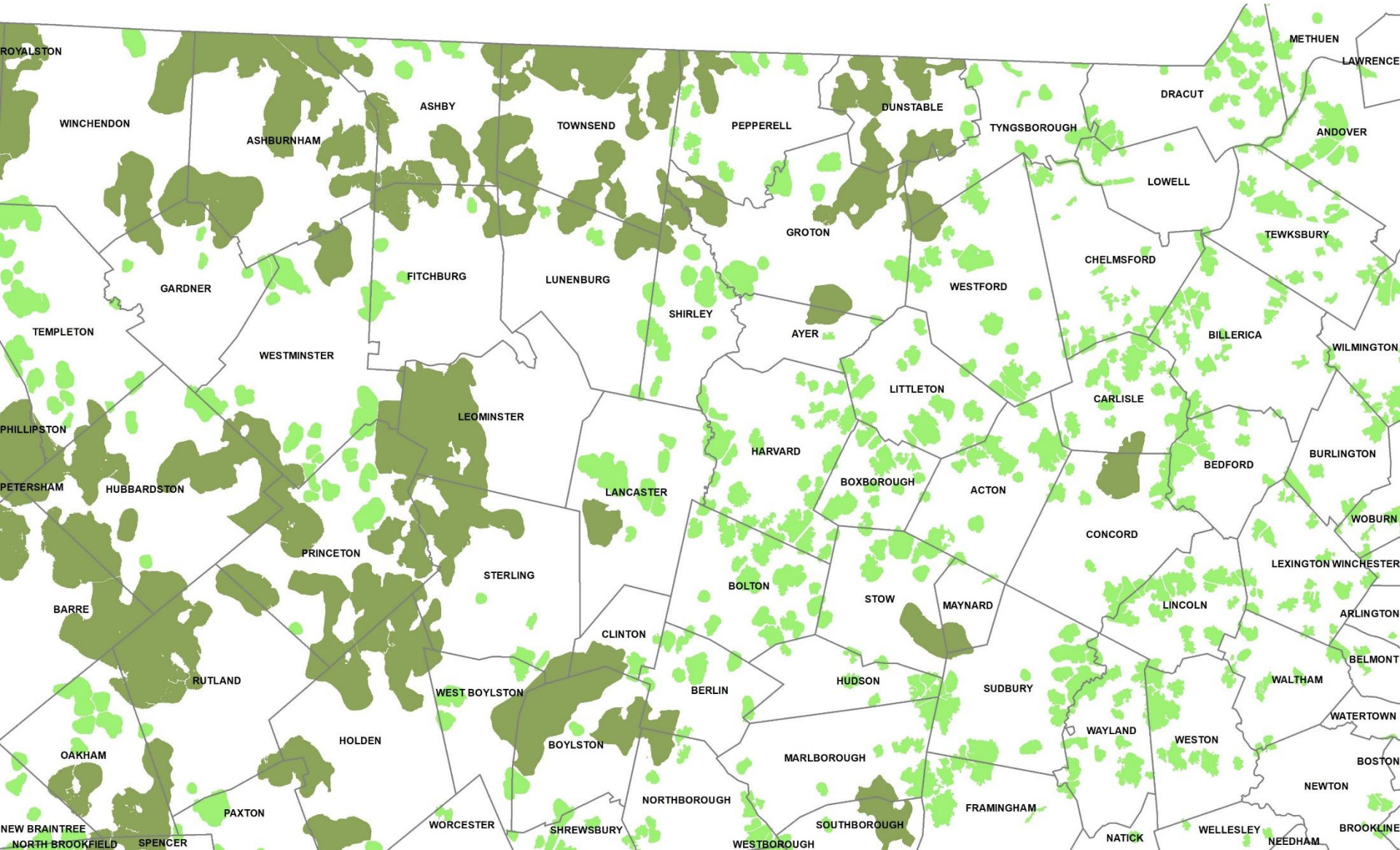
Local Landscapes

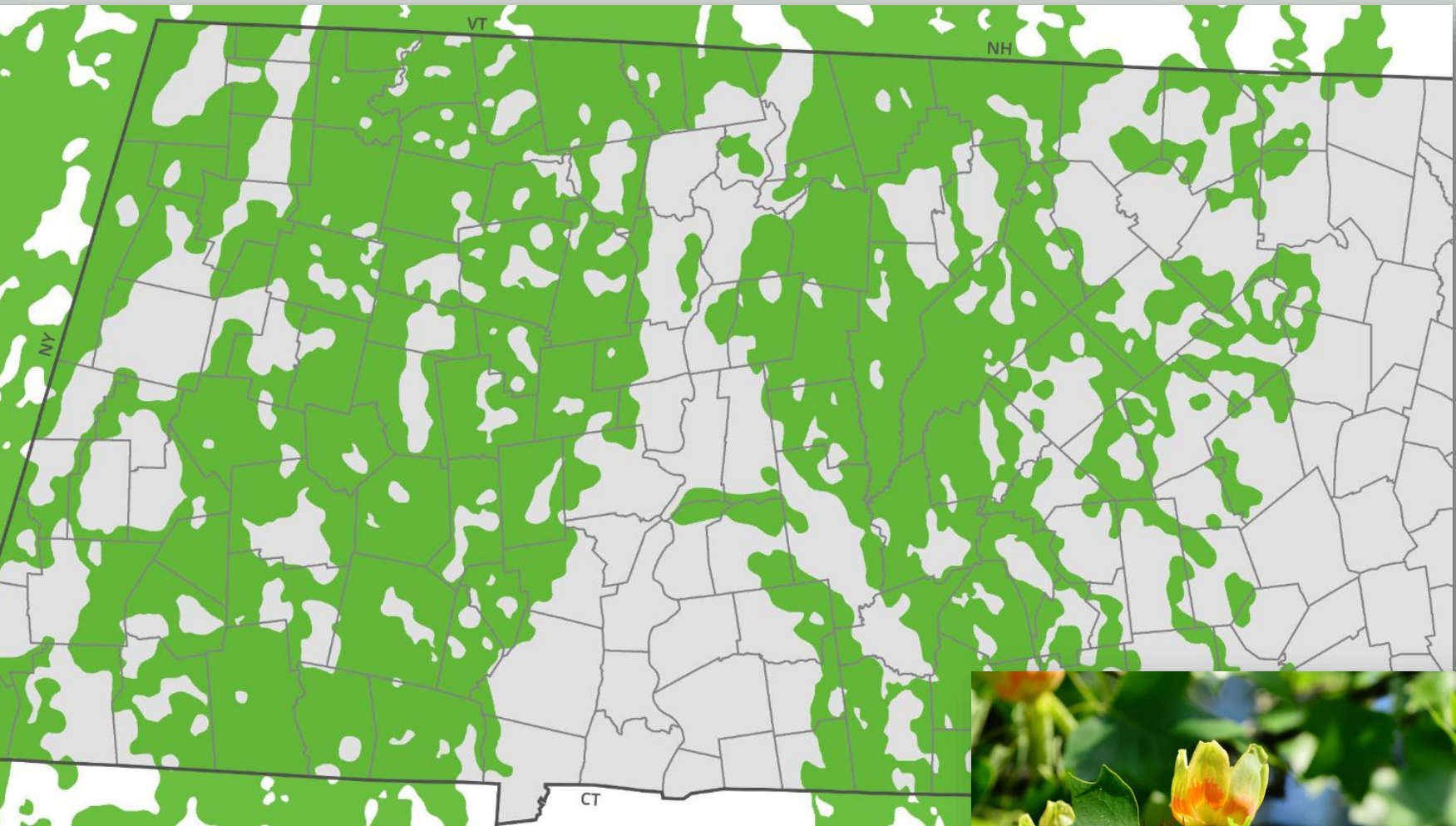


Landscape Blocks



Local Landscapes





Regional Connectivity



BioMap: A TOOL

BIOMAP

The Future of Conservation in Massachusetts

[What is BioMap](#)

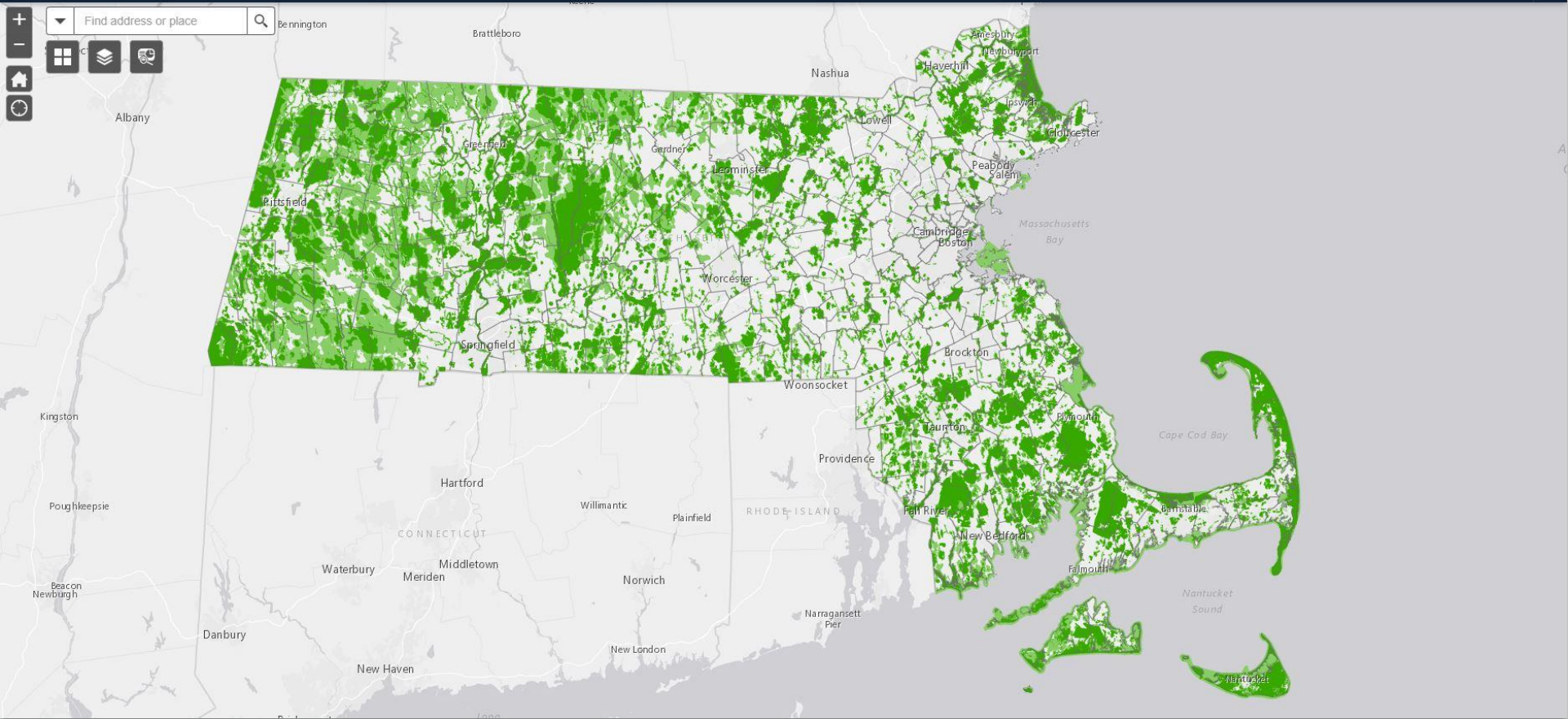
[BioMap Components](#)

[How to Use BioMap](#)

[What's New](#)



BioMap: The Future of Conservation in Massachusetts



Land Protection

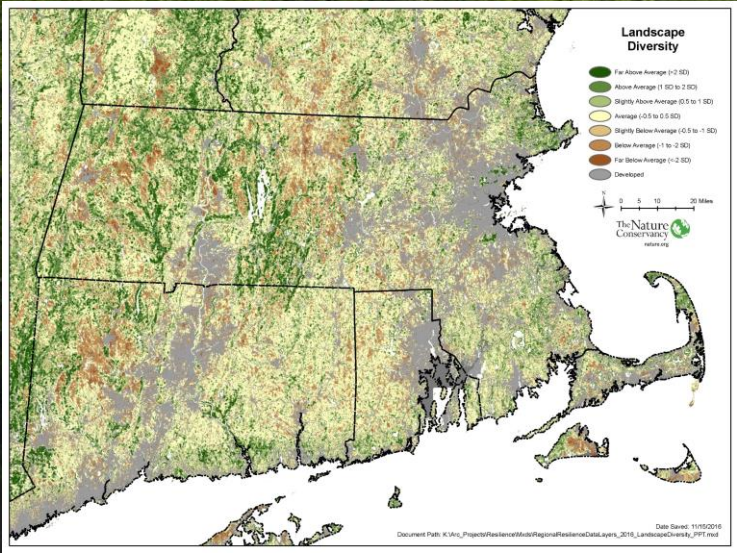


Habitat Restoration Resource Center



Restoring and Managing Habitats for
Biodiversity and Climate Resilience





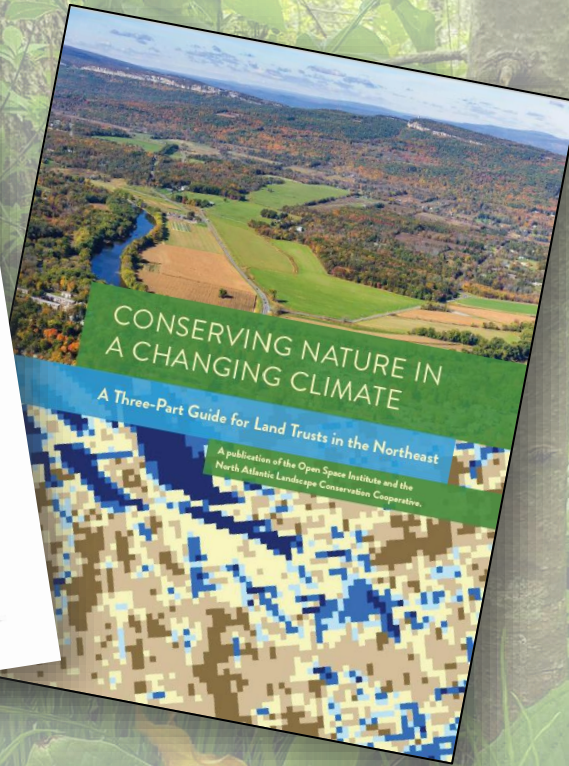
Climate Resilience

Planning, Funding & Collaboration

Essex County Greenbelt Association
Land Conservation Prioritization Project



 **Greenbelt**
Essex County's Land Trust



 **Mass.gov**

Search Mass.gov

SEARCH 

 > [EEA](#) > [Division of Conservation Services](#)

 OFFERED BY [Division of Conservation Services](#)

Grant Programs offered by the Division of Conservation Services

Learn about the grant programs offered by DCS.

BioMap: A VISION



Quabbin Reservoir

DRINKING WATER



CARBON SEQUESTRATION



HEALTH AND RECREATION



WILDLIFE HABITAT



FLOOD MITIGATION

Acknowledgments

- Massachusetts Executive Office of Energy and Environmental Affairs, especially former Secretary Kathleen Theoharides
- The Beveridge Family Foundation and numerous generous donors
- MassWildlife
 - Eve Schluter, Jonathan Regosin, Tara Boswell, Daniel Bove, Jonathan Brooks, Chris Buelow, Caren Caljouw, Jason Carmignani, Karen Dolan, Alex Entrup, Martin Feehan, Karro Frost, Troy Gipps, Brian Hawthorne, H Heusmann, Mike Huguenin, Mike Jones, Adam Kautza, Jacob Kubel, Andrew Madden, Sarah Maier, Steven Mattocks, Ben Mazzei, Nicole McSweeney, Jacob Morris-Siegel, Carolyn Mostello, Michael Nelson, Marianne Piche, Rebecca Quinones, Todd Richards, Susan Sacco, Dave Scarpitti,, Emily Stolarski, Jason Stolarski, Dave Sczcebak, Andrew Vitz, Dave Wattles, Robert Wernerehl
- MA Department of Fish and Game
 - Dan Koch, Elaine Brewer, Michael LaChance, Christy Edwards
- The Nature Conservancy
 - Andy Finton, Jessica Dietrich, Becky Budd, Melissa Clark, Arlene Olivero, Mark Anderson
- Additional Contributors
 - James DeNormandie, Brad Compton, Nancy Crowley, Scott Jackson



[Mass.gov/biomap](https://www.mass.gov/biomap)



MASSWILDLIFE

The Nature
Conservancy

