



# Sudbury Valley Trustees Land Trusts and the MVP process



# Land Protection





# Participate and Advocate!



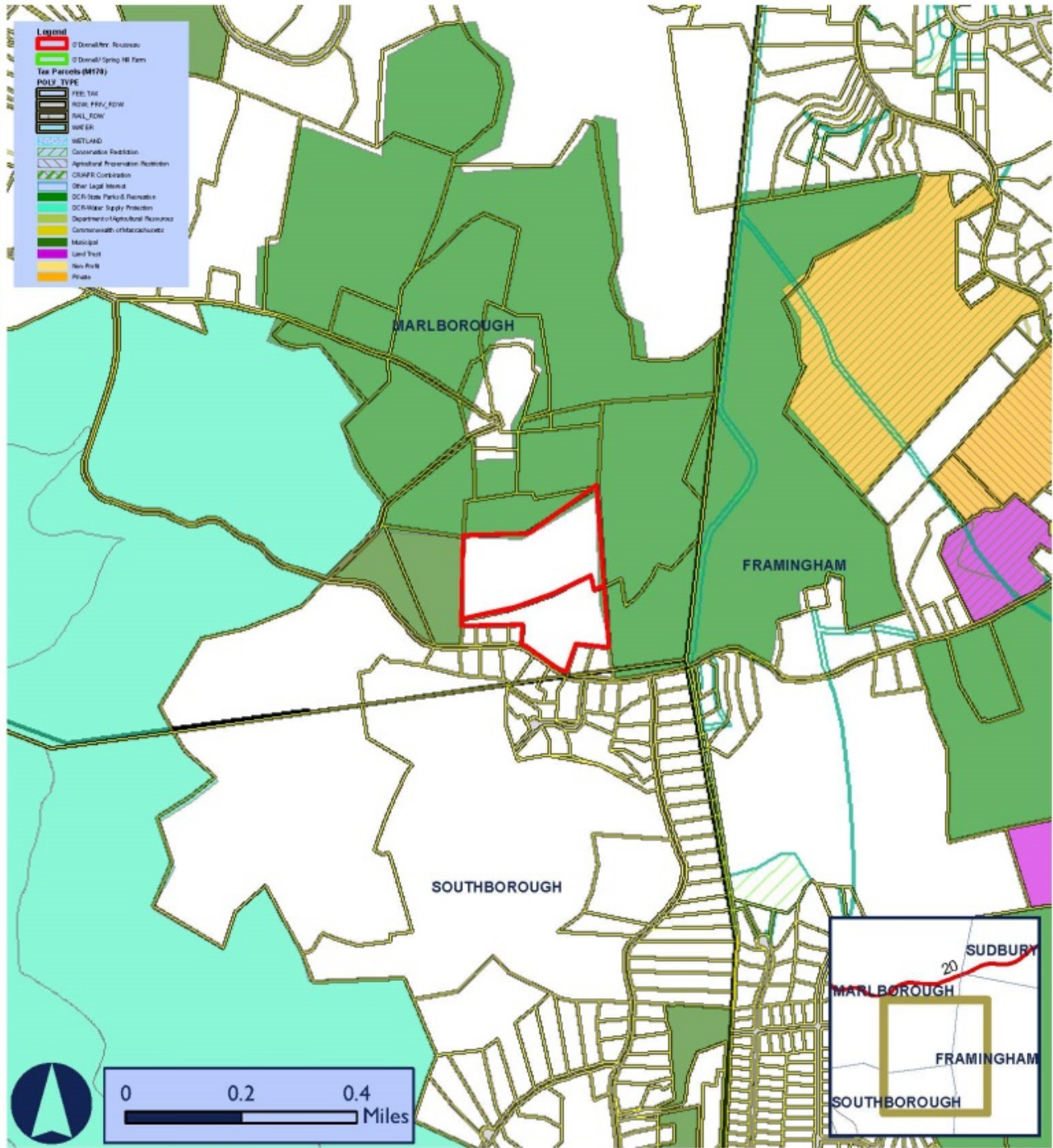
# MVP Land Acquisition criteria

- Land or property acquisition is supported by the MVP Program in order to:
  - Implement green infrastructure projects or create new community green space
  - Preserve prime agricultural soils, provide natural flood storage, or deliver other eco-services
  - Accommodate a critical infrastructure or facility redesign or retrofit project

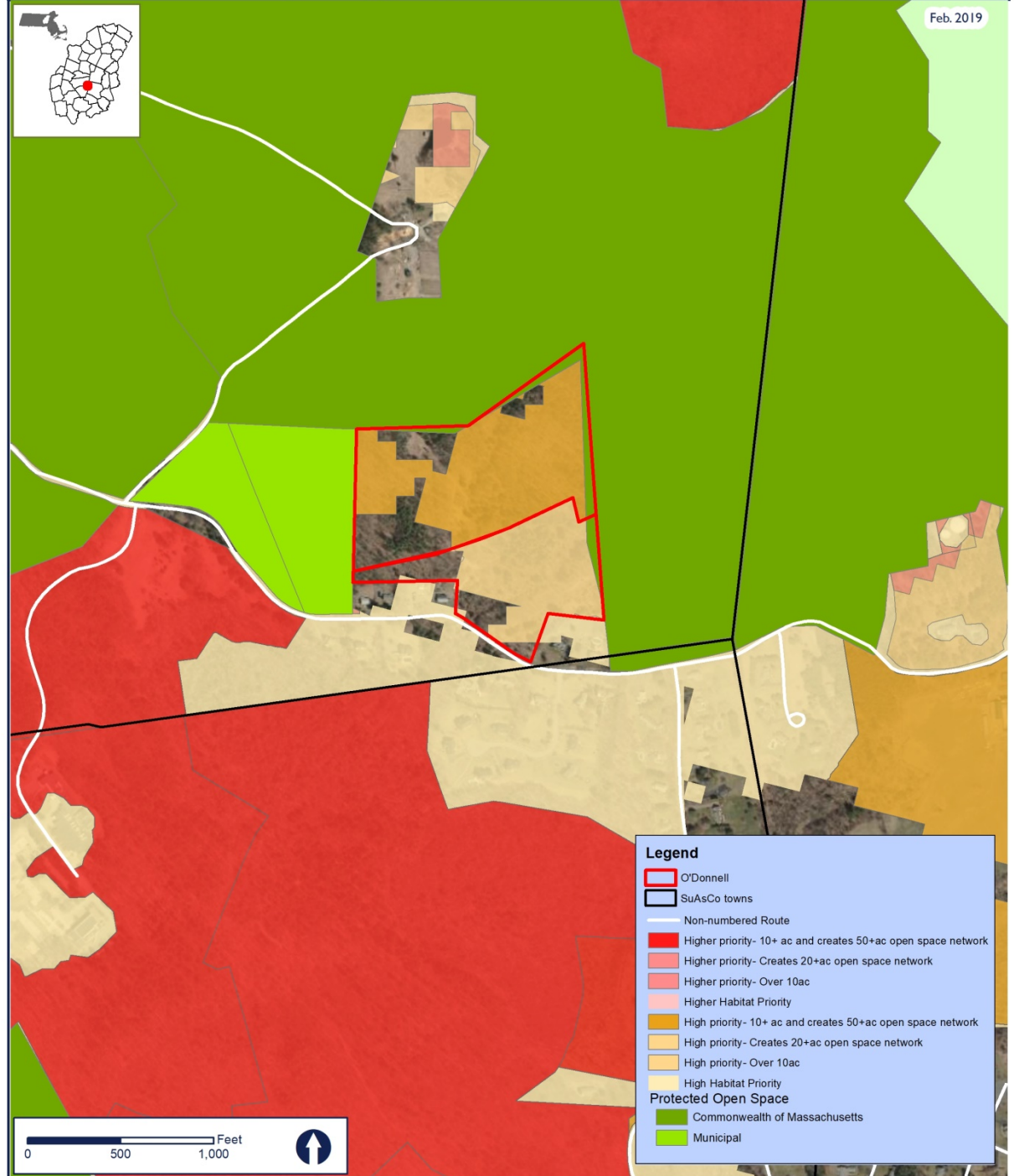




- NOTE: Property interests purchased with MVP funds:
- Must include a municipally-held interest in the property (e.g., holding the fee interest or the conservation restriction).
- May be used to relocate a critical facility or piece of infrastructure when:
  - The land to be purchased has been identified through a climate vulnerability assessment as an appropriate, resilient location for the facility or infrastructure, and
  - There is a plan in place to restore the ecological function of the current facility/infrastructure site.







**Legend**

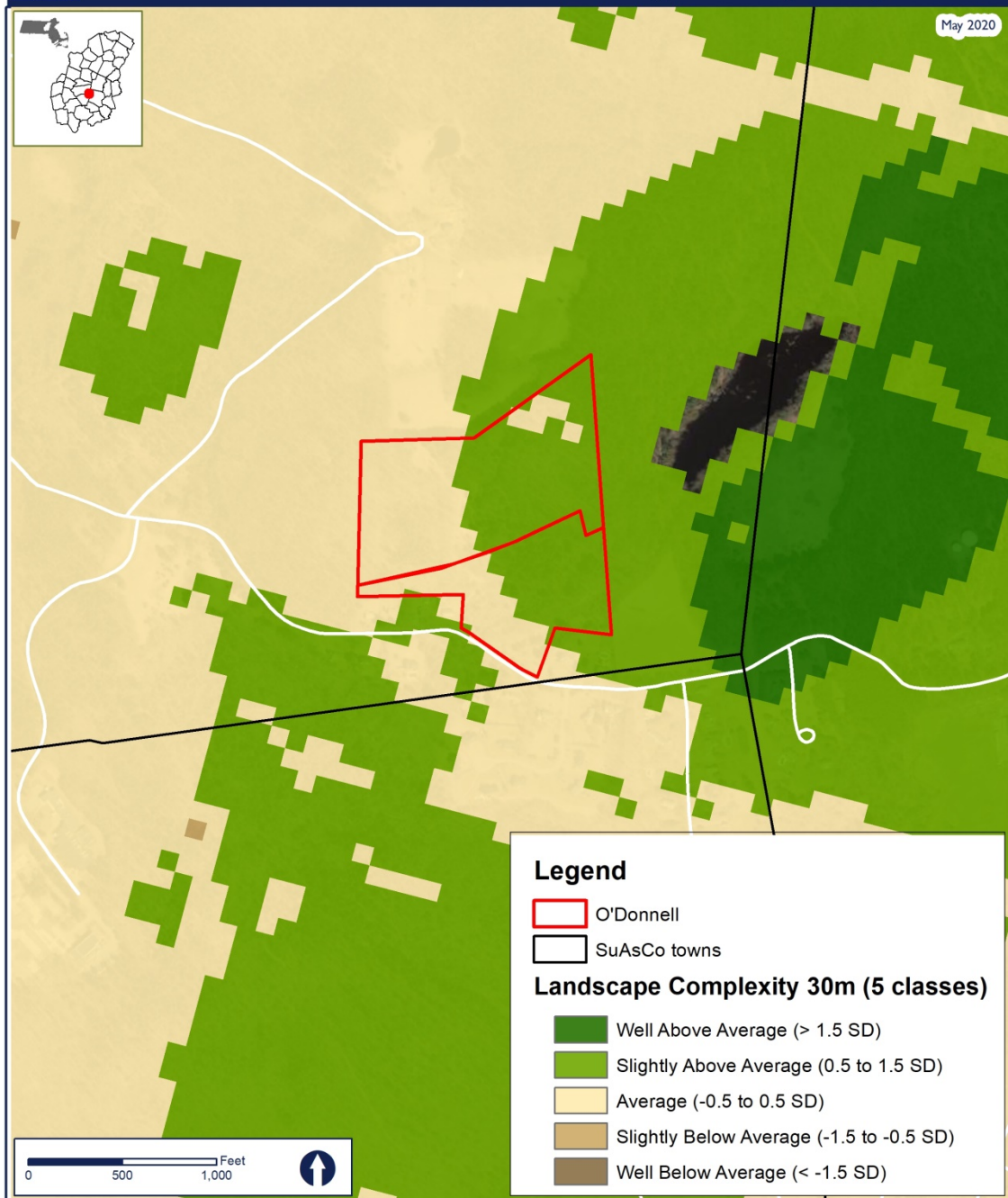
- O'Donnell
- SuAsCo towns
- Non-numbered Route
- Higher priority- 10+ ac and creates 50+ac open space network
- Higher priority- Creates 20+ac open space network
- Higher priority- Over 10ac
- Higher Habitat Priority
- High priority- 10+ ac and creates 50+ac open space network
- High priority- Creates 20+ac open space network
- High priority- Over 10ac
- High Habitat Priority
- Protected Open Space**
- Commonwealth of Massachusetts
- Municipal





# O'Donnell, Marlborough: Landscape Complexity

May 2020



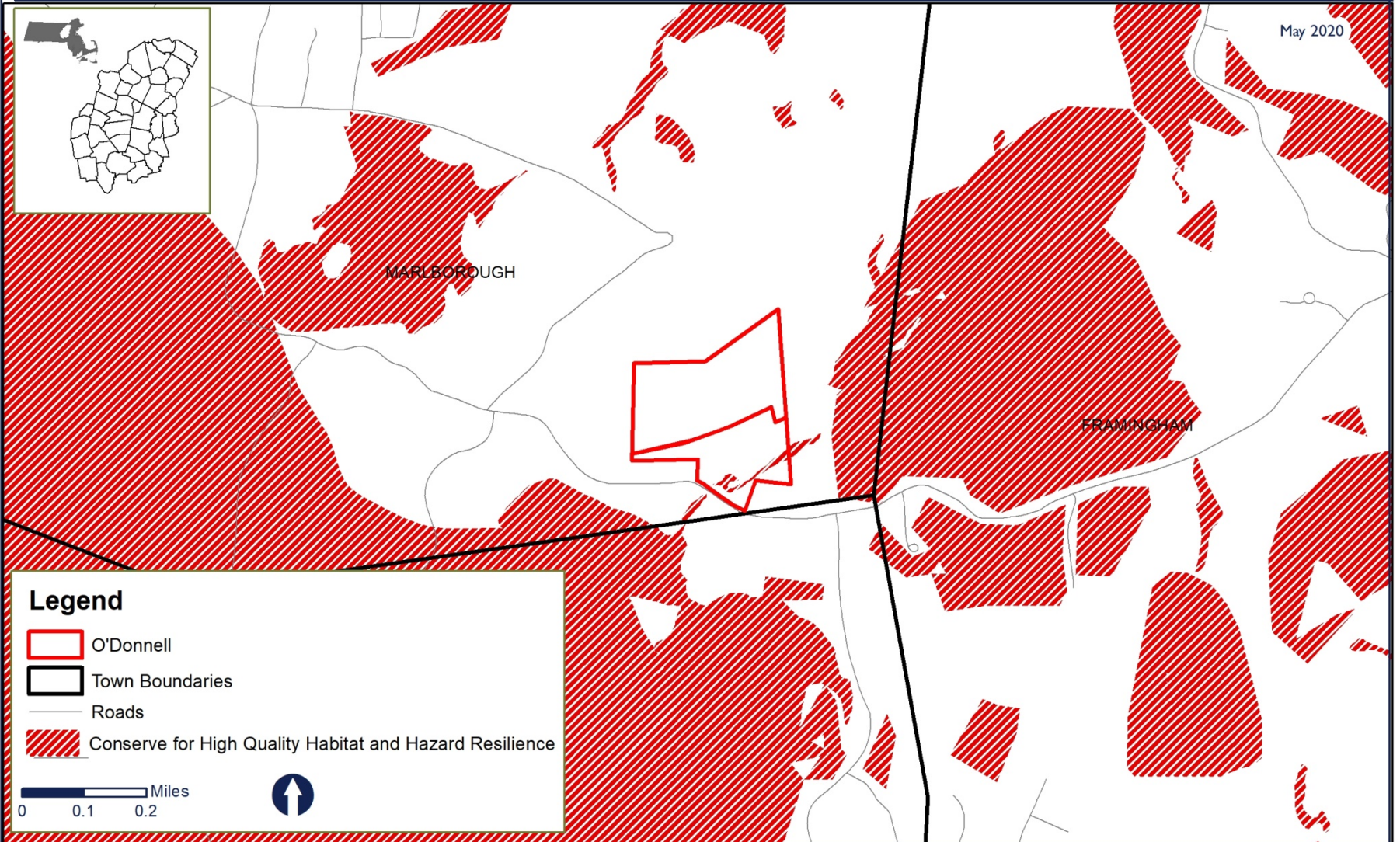




# O'Donnell - Biodiversity Context

Marlborough

May 2020



## Legend

- O'Donnell
- Town Boundaries
- Roads
- Conserve for High Quality Habitat and Hazard Resilience

0 0.1 0.2 Miles



Map produced by Sudbury Valley Trustees. Data provided by Office of Geographic and Environmental Information (MassGIS), Commonwealth of Massachusetts Executive Office of Energy and Environmental Affairs. This map should be used for reference only. Boundary lines are approximate.

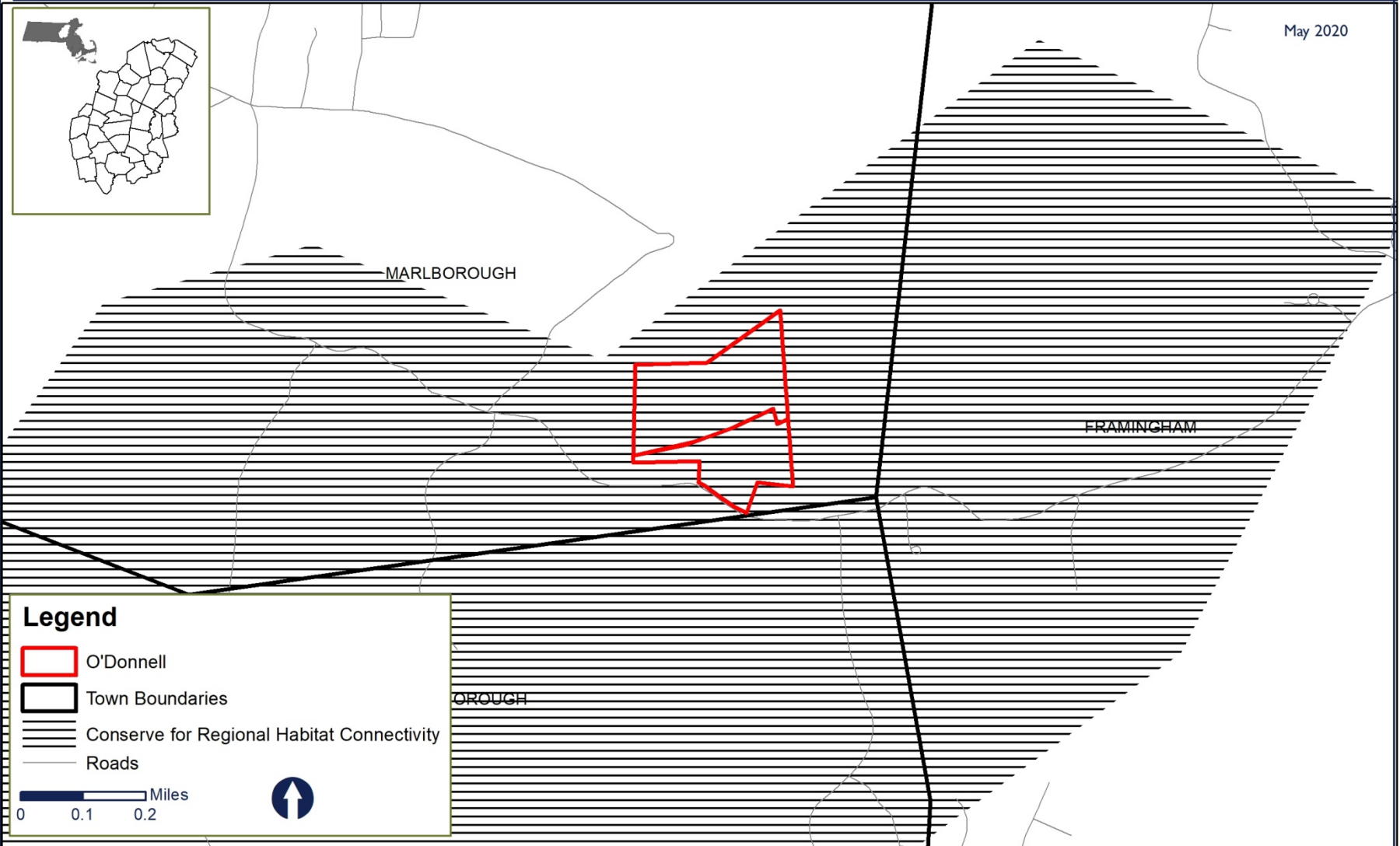
Sudbury Valley Trustees - 18 Wolbach Road - Sudbury, MA 01776 - 978-443-5588 - web@svtweb.org - www.svtweb.org





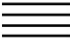


# O'Donnell - Regional Habitat Connectivity

## Marlborough

May 2020



### Legend

-  O'Donnell
  -  Town Boundaries
  -  Conserve for Regional Habitat Connectivity
  -  Roads
- 0 0.1 0.2 Miles 

Map produced by Sudbury Valley Trustees. Data provided by Office of Geographic and Environmental Information (MassGIS), Commonwealth of Massachusetts Executive Office of Energy and Environmental Affairs. This map should be used for reference only. Boundary lines are approximate.

Sudbury Valley Trustees - 18 Wolbach Road - Sudbury, MA 01776 - 978-443-5588 - web@svtweb.org - www.svtweb.org



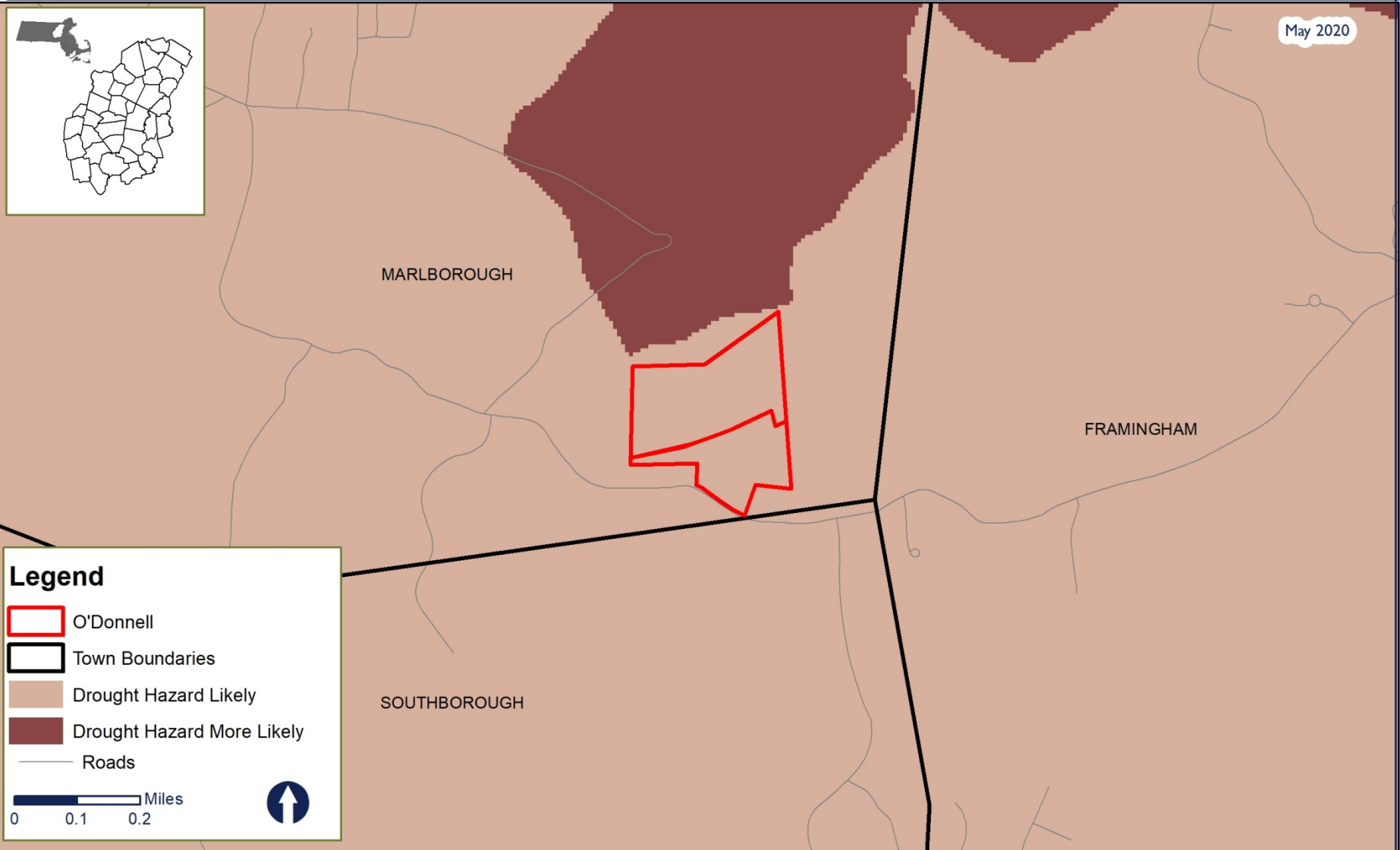


# O'Donnell - Drought Hazard

Marlborough



May 2020



**Legend**

- O'Donnell
- Town Boundaries
- Drought Hazard Likely
- Drought Hazard More Likely
- Roads

0 0.1 0.2 Miles

Map produced by Sudbury Valley Trustees. Data provided by Office of Geographic and Environmental Information (MassGIS), Commonwealth of Massachusetts Executive Office of Energy and Environmental Affairs. This map should be used for reference only. Boundary lines are approximate.

Sudbury Valley Trustees - 18 Wolbach Road - Sudbury, MA 01776 - 978-443-5588 - web@svtweb.org - www.svtweb.org

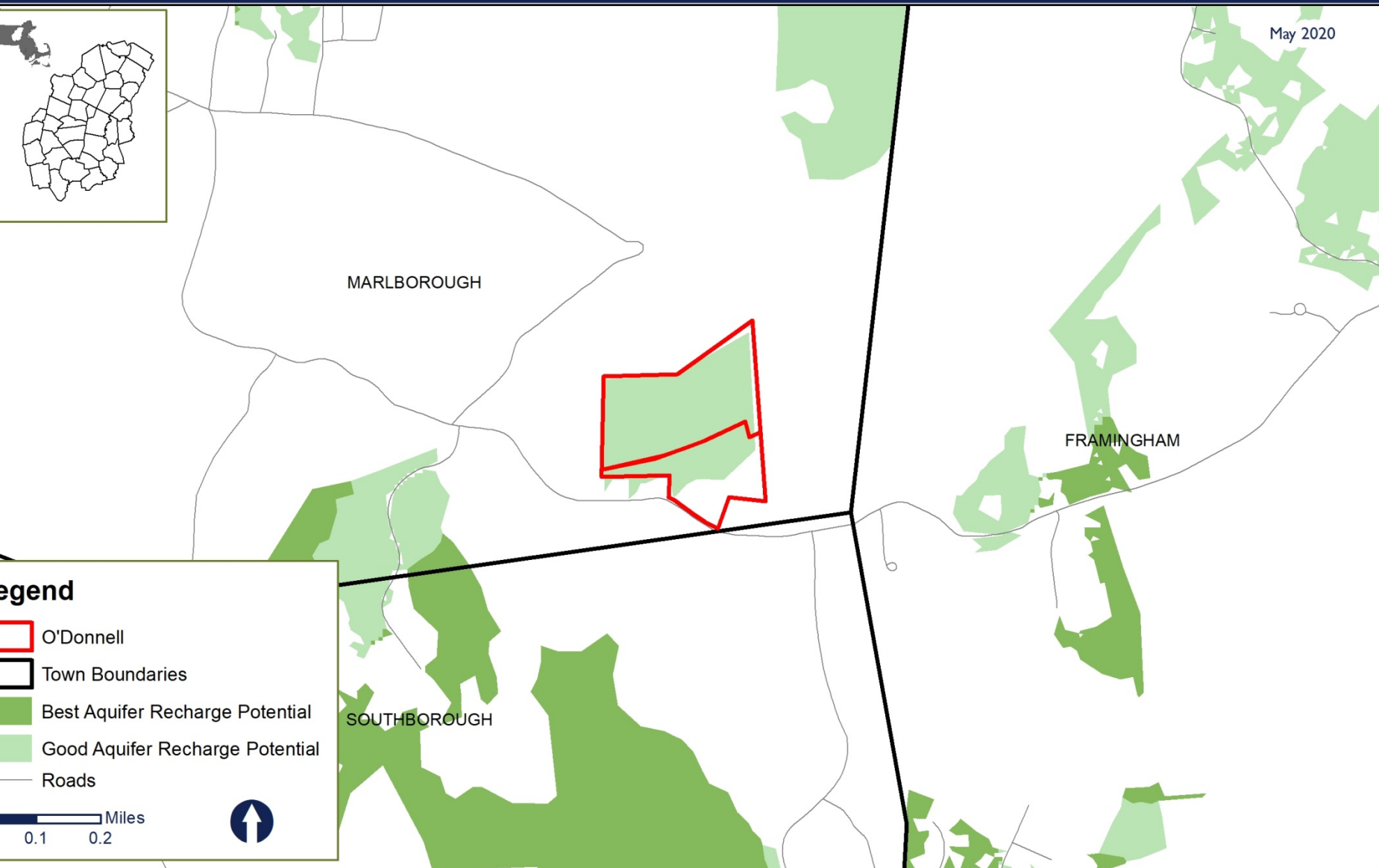


# O'Donnell - Drought Resilience

Marlborough



May 2020



## Legend

- O'Donnell
- Town Boundaries
- Best Aquifer Recharge Potential
- Good Aquifer Recharge Potential
- Roads

0.1 0.2 Miles

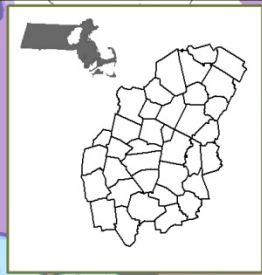






# O'Donnell - Flood Hazard

Marlborough

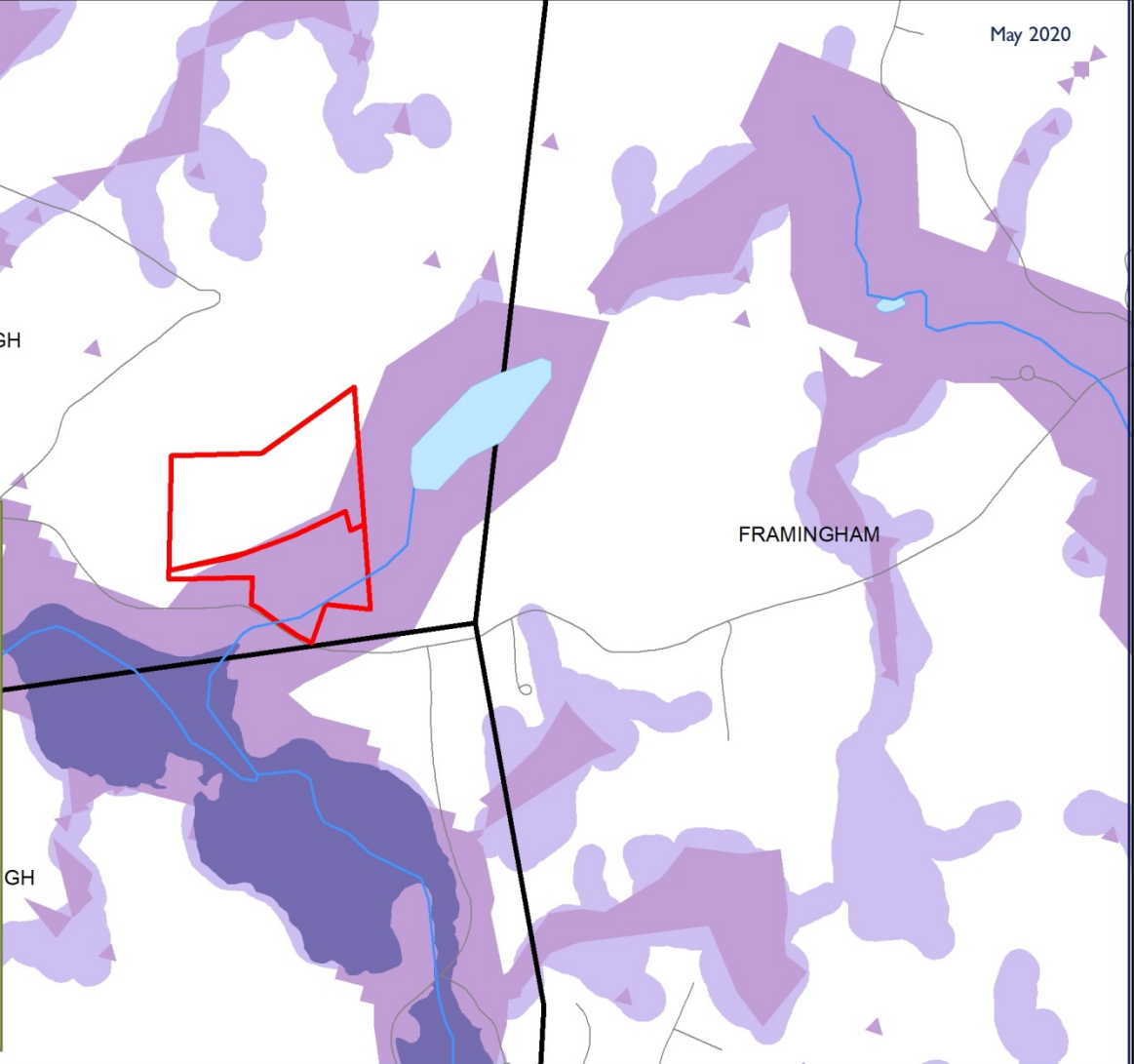


May 2020

**Legend**

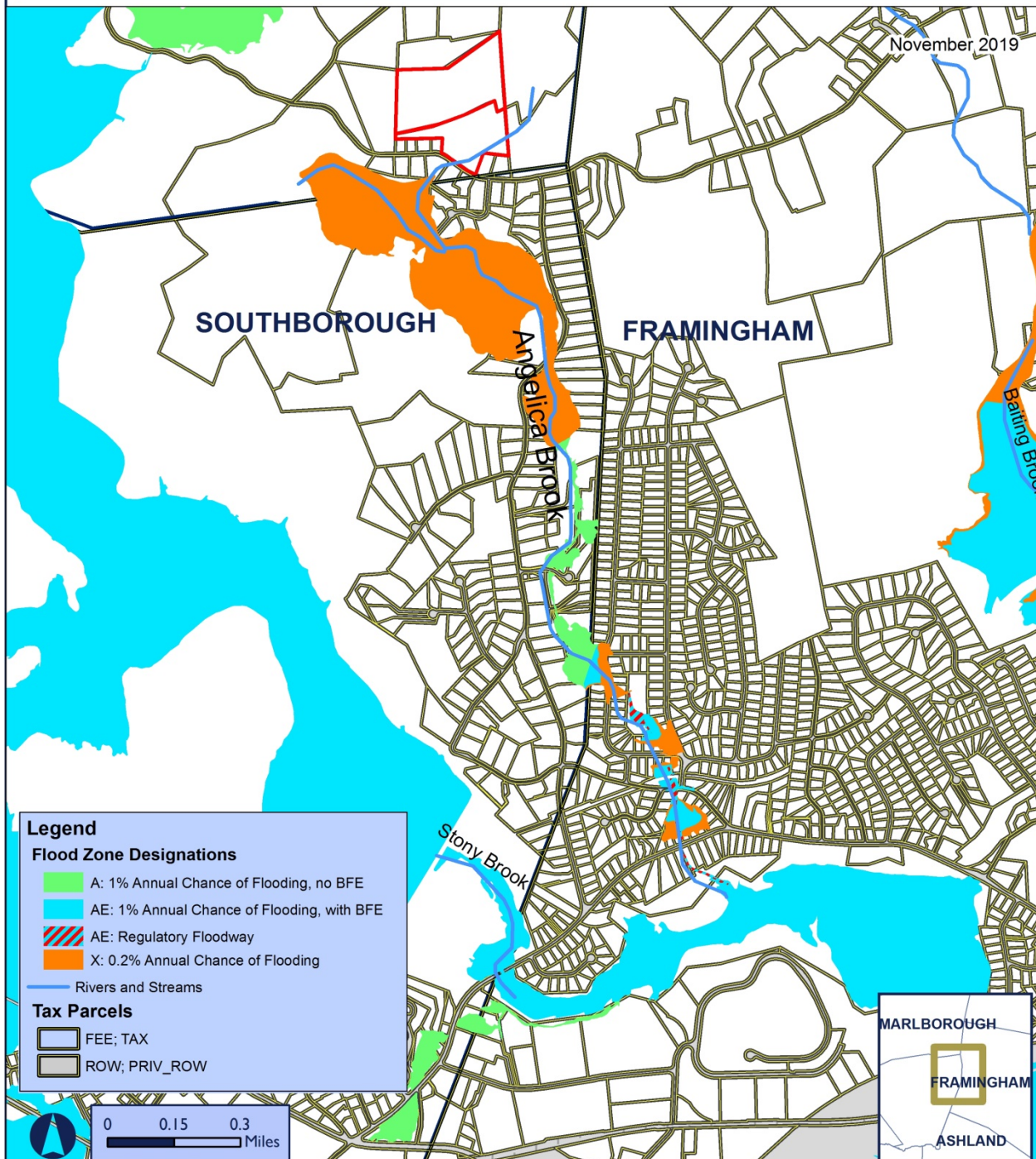
- O'Donnell
- Rivers and Streams
- Lakes and Ponds
- Town Boundaries
- Flood Hazard - Former Wetlands
- FEMA 100 and 500 year floodplains
- Open Water
- Modeled Floodplains
- Open Water
- Flood Hazard - Surface Waters and Wetlands with 100' Buffer
- Roads

0 0.1 0.2 Miles



Map produced by Sudbury Valley Trustees. Data provided by Office of Geographic and Environmental Information (MassGIS), Commonwealth of Massachusetts Executive Office of Energy and Environmental Affairs. This map should be used for reference only. Boundary lines are approximate.

Sudbury Valley Trustees - 18 Wolbach Road - Sudbury, MA 01776 - 978-443-5588 - web@svtweb.org - www.svtweb.org



SOUTHBOROUGH

FRAMINGHAM

Angellica Brook

Baiting Brook

Stony Brook

**Legend**

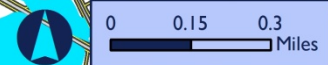
**Flood Zone Designations**

- A: 1% Annual Chance of Flooding, no BFE
- AE: 1% Annual Chance of Flooding, with BFE
- AE: Regulatory Floodway
- X: 0.2% Annual Chance of Flooding

Rivers and Streams

**Tax Parcels**

- FEE; TAX
- ROW; PRIV\_ROW

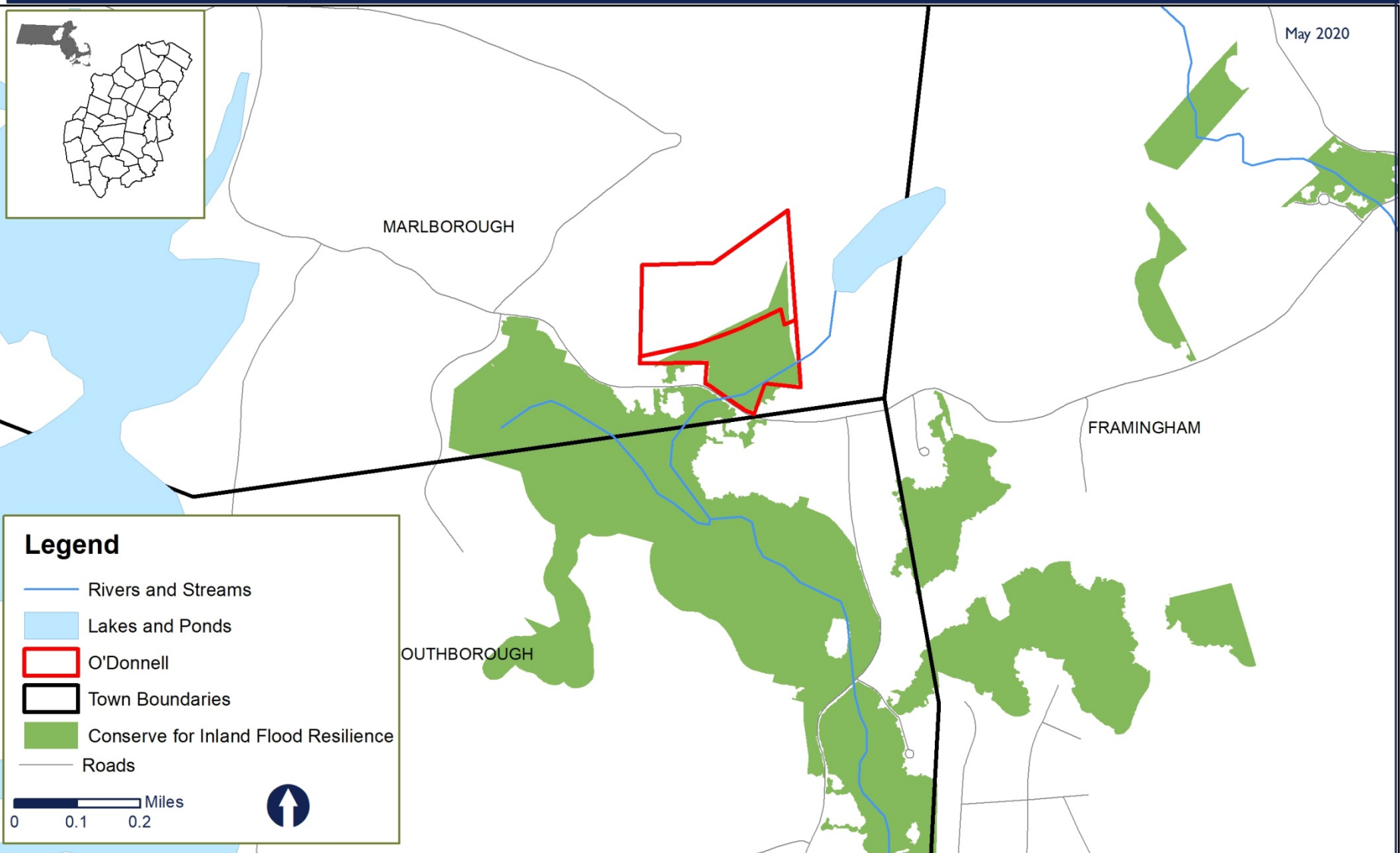




# O'Donnell - Flood Resilience

Marlborough

May 2020



## Legend

- Rivers and Streams
- Lakes and Ponds
- O'Donnell
- Town Boundaries
- Conserve for Inland Flood Resilience
- Roads

0 0.1 0.2 Miles



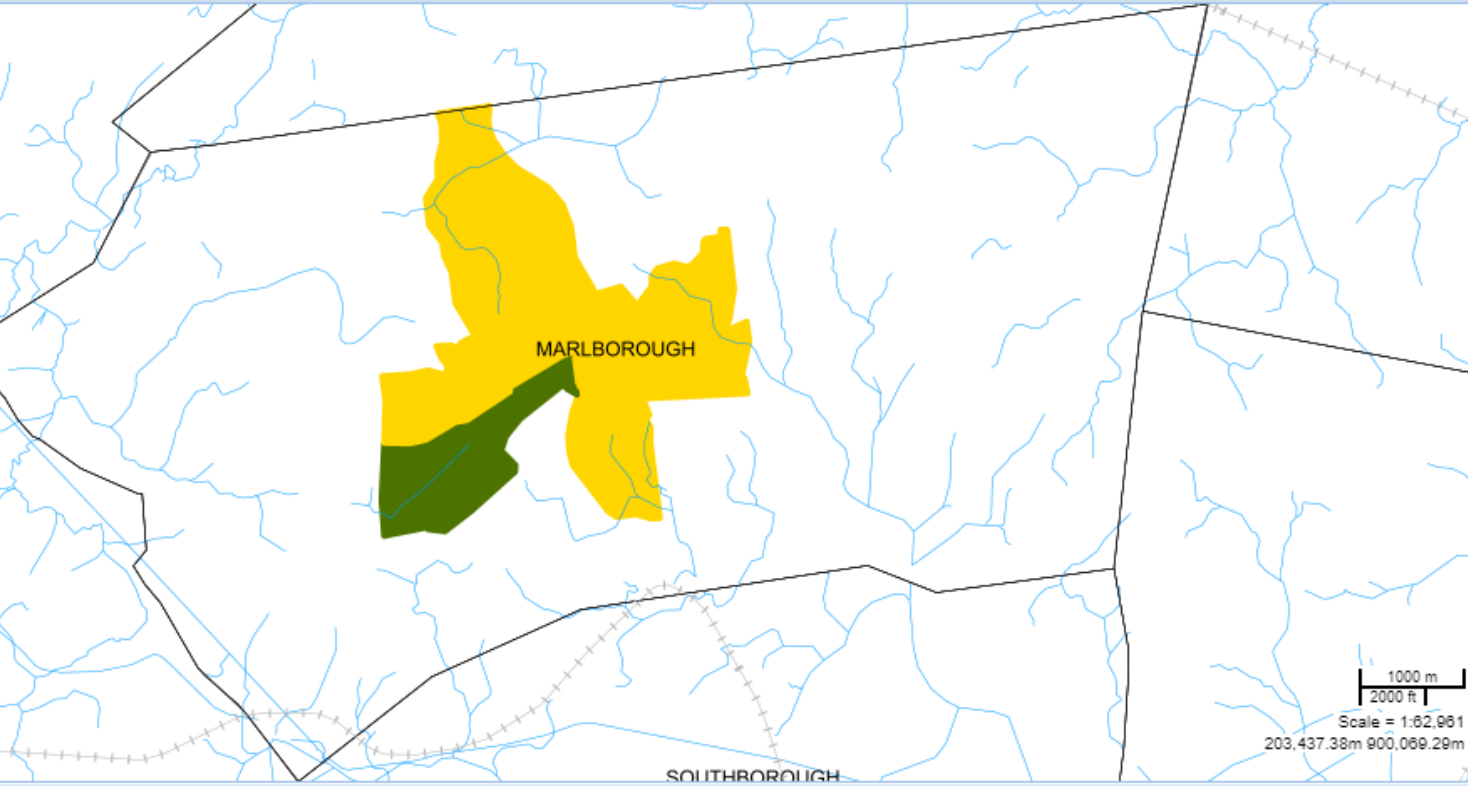


- Up to **8 points** for rationale – why project was chosen, what its objectives are, how it will positively impact the site and community and address identified climate change impacts/problems
- Up to **4 points** for the degree to which the most up-to-date climate science and data on future conditions have informed prioritization and design of project, including specific reference to climate data utilized.
- Up to 8 points for identifying and describing at least 3-4 environmental co-benefits of the proposed project.

# Community Engagement



Search for a location  Zoom to a town



### Available Data Layers

Search data layers

- Environmental Justice Layers
- Other MassGIS Layers

### Active Data Layers

Check all | Uncheck all | Rem

- Census 2010 Roads
- Massachusetts Towns Black Labels
- Census 2010 Trains
- Census 2010 Town Boundaries
- Census 2010 Water Bodies
- Census 2010 Rivers and Streams
- Environmental Justice Populations 2010

### Legend

Environmental Justice Populations 2010

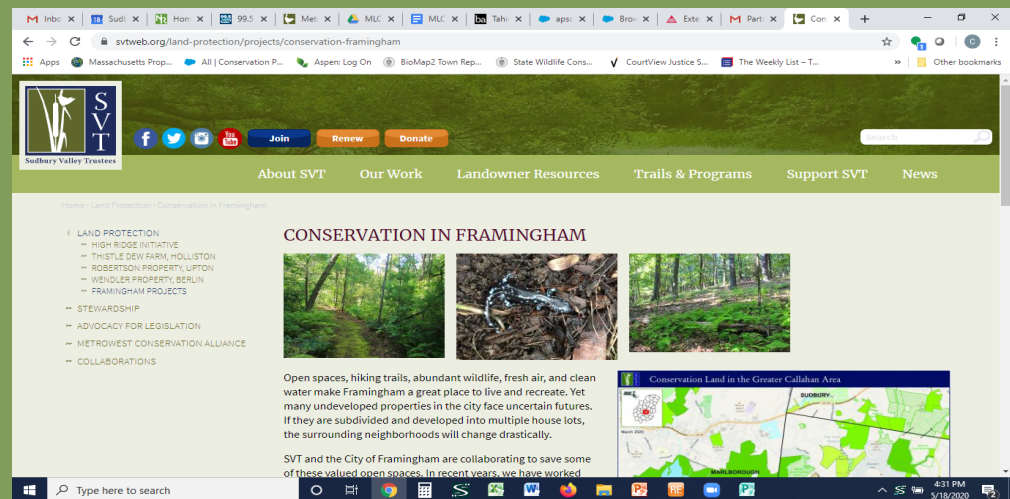
- Minority
- Income
- English Isolation
- Minority and Income
- Minority and English Isolation
- Income and English Isolation
- Minority, Income and English Isolation

Census 2010 Towns



# Public Involvement and Community Engagement strategies

- Virtual walks
- Member mailings (make sure to translate for non-English speakers)
- Brainstorm other user groups (Mt. bikers, dog walkers, trail runners)
- Inserts in other mailings - Town Meeting warrants, tax bills, water bills, etc.
- Social media



# Today's Presenters

- Hillary King, MVP Central Regional Coordinator  
[hillary.king@state.ma.us](mailto:hillary.king@state.ma.us)
- Sara Burns, Water Resource Scientist for The Nature Conservancy in Massachusetts  
[sara.burns@tnc.org](mailto:sara.burns@tnc.org)
- Jessica Dietrich, GIS Manager for The Nature Conservancy in Massachusetts  
[jessica.dietrich@tnc.org](mailto:jessica.dietrich@tnc.org)
- Christa Collins, Director of Land Protection, Sudbury Valley Trustees  
[ccollins@svtweb.org](mailto:ccollins@svtweb.org)